

Straw spreader

Type SVV, SVG

Operator's manual ENG

Read carefully before use



Manufactured by: Flingk Machinebouw B.V.

Flingk Machinebouw B.V.
Retselseweg 11A
5473 HC Heeswijk-Dinther
The Netherlands

Tel: +31(0)85-0685613
info@flingk.com
www.flingk.com

All rights reserved. No part of this book may be reproduced, stored in a database or retrieval system, or published, in any form or any way, electronically, optically, by print, or any other means, without prior written permission from Flingk Machinebouw B.V.

Version: V01.40

First publication: 26 April 2021

Full translation of the original Dutch version.

PREFACE

The SVV and SVG straw spreaders are high quality and durable machines, designed and built to discharge the straw with ease.

This manual has been prepared to enable you to obtain the best results from the Flingk straw spreader under safe working conditions, so please read and observe this operator's manual carefully before you start working and make sure you follow the instructions while working.

Although, the machine has been designed conform the EC certificate of conformity, always use extreme caution when operating the straw spreader. Read all instructions which are written in this operator's manual and those within the operator's manual of the connected machine carefully and make sure you take them into account.

Because Flingk Machinebouw strives towards continuous product improvement, they reserve the right to change design and/or specifications without notice. This does not include an obligation to make changes to machines previously supplied.

If anyone does not fully understand every part of this operator's manual, please obtain further assistance by contacting the dealer from which this product was purchased or by contacting Flingk Machinebouw. Keep this manual available for reference whenever this product is being handled or used. Provide this manual to any new owners and/or operators.

Flingk Machinebouw wishes you a pleasant use!

Supplier details:



GENERAL SAFETY PRECAUTIONS

The straw spreader may only be used by those persons which have read and understand the within this operator's manual specified safety and operating instructions. Only completely competent operators which know how to use the controls, the straw spreader's capabilities, dimensions and all safety requirements may operate the straw spreader.

Before using the straw spreader, check whether the combination of the straw spreader and connected machine is safe. Pay special attention towards the maximum lifting capacity and hydraulic power of the connected machine.

The Flingk straw spreader is designed and built to discharge straw. Use the straw spreader solely for dividing straw and not for dividing other materials.

Use the straw spreader only for the purposes for which it was designed! Nobody, no persons, animals or other goods shall ride on/in the straw spreader during transport and/or operation.

The straw spreader is solely designed for use on private terrain, do not use or drive with it on the public road. In case you want to transport the straw spreader always adhere to the traffic, safety and environmental regulations and transport the machine in a responsible and safe manner.

Take care that nobody will be within the dangerous zone while operating, transporting or riding with the straw spreader. As an operator always ensure that nobody is within the reach of moving parts, within the operating area, or within close proximity of the machine while working.

Make sure nobody stays between the straw spreader and the bedding material while loading the straw spreader.

Maintenance and repair practices may only be performed by skilled specialists. Any work done on the hydraulic system should be done by Flingk Machinebouw or authorized dealers.

Never attempt to work on or repair the straw spreader while it is running! All power sources must be completely disengaged and the straw spreader should be placed in the horizontal position on a firm, level surface that is large enough to safely accommodate the straw spreader while repairing, cleaning or adjusting.

Never leave the connected machine unattended while the engine is running or with the straw spreader in an upright position. Always place the straw spreader in the horizontal position on a firm, level surface which is large enough to safely accommodate the straw spreader after use.



EG-DECLARATION OF CONFORMITY
according to annex II A of EC Machinery Directive 2006/42/EC

Manufacturer: Flingk Machinebouw B.V.
Located: Retselseweg 11A
5473 HG Heeswijk-Dinther
The Netherlands

hereby declares that the following machinery

Flingk straw spreader type: SVV, SVG

with the serial number effective from

Serial No. 87-19-3296

fulfils all of the relevant requirements of the EC Machinery Directive 2006/42/EG.

's-Hertogenbosch, 2 August 2016

On behalf of Flingk Machinebouw B.V.,

Dhr. Ing. N.C.W van den Berselaar

A handwritten signature in blue ink, appearing to be 'N.C.W. van den Berselaar', written over a faint circular stamp or watermark.

If any significant changes are made to this machine that could affect its safety or compliance with the regulations, its conformity must be reassessed and confirmed before the machine is put back into service.

TABLE OF CONTENT

Preface.....	3
General safety precautions	4
1 Safety instructions.....	7
2 Nameplate details	9
3 Lifting instructions.....	10
4 Product description.....	11
5 Technical specifications.....	11
6 Hydraulic flow chart	12
7 Commisioning.....	17
7.1 Mounting the linkage	17
7.2 Coupling the machine.....	18
7.2.1 Connection by means of a quick coupler system	18
7.2.2 Connection by means of a three-point linkage	18
8 Operating instructions	20
8.1 Loading the straw spreader.....	21
8.2 Riding with the straw spreader	22
8.3 Spreading.....	23
8.4 Storage of the straw spreader.....	23
9 Maintenance	24
9.1 Tightening the conveyor belt	24
10 Parts lists	26
10.1 SVV 1000.....	26
10.2 SVV 1250/2500.....	27
10.3 SVV 1250/2500 HD	28
10.4 SVG 1250/2500.....	29
10.5 Spreading module conveyor belt	30
10.6 Spreading module spreading discs.....	31
10.7 Option far spreading for conveyor belt.....	32
10.8 Option manual winding system for ropes.....	33
11 Warranty conditions	34

1 SAFETY INSTRUCTIONS

Read all safety decals and safety statements in all manuals prior to operating or working with this equipment.



DANGER!

This symbol by itself or with a warning word throughout this manual is used to call your attention to instructions involving your personal safety or the safety of others. Failure to follow these instructions can result in injury or death.

The machine has been marked with safety decals without text. For a safe use of the straw spreader make sure you understand and follow up the instructions on these decals. What is the danger, in which place does the danger occur and, very important, which safety instructions must be taken?

Be careful and be aware of the risks that are associated with the use of the straw spreader! The meaning of the decals are shown below.

- Carefully read the operator's manual before handling the machine. Observe instructions and safety rules when operating.
- Stop engine and ensure it cannot be re-started during performance of work on the machine.
- High pressure fluid hazard!
Hydraulic fluid under pressure can penetrate the skin and cause serious injury or death. Always work warily and make sure all hoses and pipes are depressurized during maintenance and repair.



- Use the straw spreader only for the purposes for which it was designed! Nobody, no persons, animals or other goods shall ride on/in the straw spreader or be transported by the straw spreader in any case.
- Attention moving parts!
Stay clear of rotating and moving parts. Maintain a safe distance and make sure nobody is able to come in contact with the moving parts while operating. Never attempt to work on or repair the straw spreader while it is connected to the power source.
- Danger for crushing!
When connecting the straw spreader, make sure nobody is between the straw spreader and the machine.
- Attention flying objects!
Stay clear of the machine and keep out the spreading range of the machine



2 NAMEPLATE DETAILS

The nameplate of the Flingk straw spreader is located in the front of the machine, right above the linkage. In case of correspondence, kindly state the type- and serial number of your machine. Complete the text below with the corresponding numbers on the nameplate.



- A. Machine :
- B. Type :
- C. Serial number :
- D. Year of build :
- E. Weight :
- F. F1 Max. flow (Q_{max}) [l/min] :
- G. F1 Max. pressure (P_{max}) [bar] :
- H. F2 Max. flow (Q_{max}) [l/min] :
- I. F2 Max. pressure (P_{max}) [bar] :
- J. Voltage [V] :
- K. Current [A] :

3 LIFTING INSTRUCTIONS

For the movement and transport of the Flingk straw spreader without a suitable machine, make sure you use the mounting points as indicated within the picture below.

When the straw spreader lays horizontal on a flat surface, the machine can be lifted with pallet forks. These have to be long enough, so they carry the whole width of the machine. Be careful so the machine is not damaged.

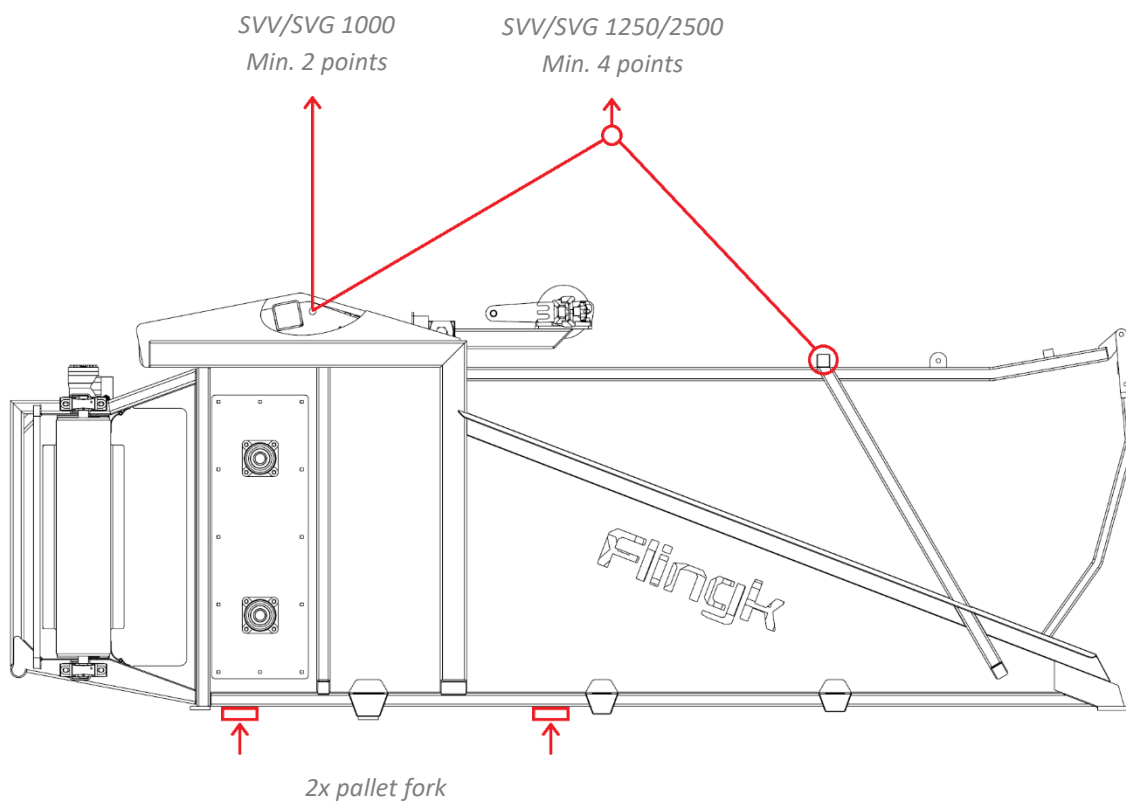
Always check the lifting capacity of the lifting equipment. The mass of the Flingk straw spreader is on the nameplate or in chapter 5 of this manual



Your straw spreader could be different from the machine in the picture. Hereby your machine can behave differently during lifting. Do not start lifting if you are not sure it is safe!



The straw spreader may only be lifted when there isn't any straw in the machine.



4 PRODUCT DESCRIPTION

The Flingk SVV and SVG straw spreaders are high quality and durable machines, designed and built to distribute straw into cubicles and stalls with ease. De machine is made to distribute rectangular straw bales. Depending on the type different sizes bales can be loaded. The different types can be found in chapter 5 of this manual. The SVV or SVG straw spreader can be carried out with or without a spreading module. Without a spreading module the straw is unloaded at the bottom of the machine. A conveyor belt or spreading discs can be mounted. With a conveyor belt mounted, the straw will be unloaded to the left or to the right. With spreading discs mounted, the straw will be spread wide to the front.

5 TECHNICAL SPECIFICATIONS

Technical specifications Flingk straw spreader Type SVV

Model	SVV 1000	SVV 1250	SVV 1250 HD	SVV 2500	SVV 2500 HD
Suitable for	Straw	Straw	Straw	Straw	Straw
Width (mm)	1500	1500	1600	1500	1600
Maximum bale size LxWxH (mm)	1000x1200x900	1250x1200x900	1250x1200x900	2500x1200x900	2500x1200x900
Weight ¹ (kg)	465	605	630	710	735
Max. loading weight (kg)	200	250	250	400	400
Minimal required oil capacity	30 L/min 175 bar	40 L/min 175 bar	60+30 L/min 175 bar	40 L/min 175 bar	60+30 L/min 175 bar
Maximum oil capacity	60 L/min 225 bar	60 L/min 225 bar	100+60 L/min 225 bar	60 L/min 225 bar	100+60 L/min 225 bar

Technical specifications Flingk straw spreader Type SVG

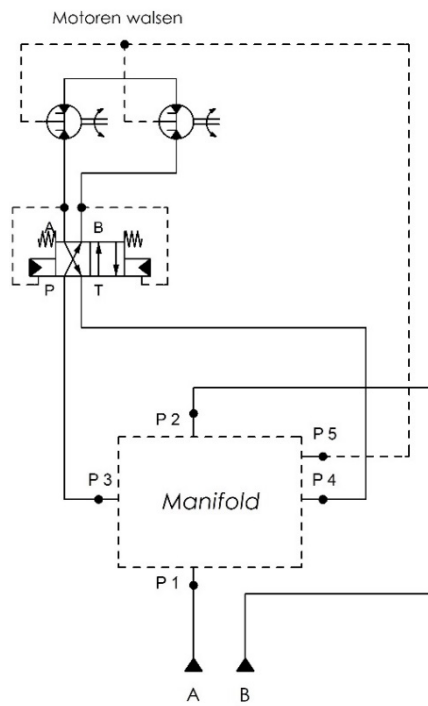
Model	SVG 1250	SVG 2500
Suitable for	Straw	Straw
Width (mm)	1500	1500
Maximum bale size LxWxH (mm)	1250x1200x900	2500x1200x900
Weight ¹ (kg)	745	860
Max. loading weight (kg)	330	530
Minimal required oil capacity	60+30 L/min 175 bar	60+30 L/min 175 bar
Maximum oil capacity	100+60 L/min 225 bar	100+60 L/min 225 bar

¹ Weight exclusive linkage and spreading module, weight may vary depending on the version of the machine and linkage;

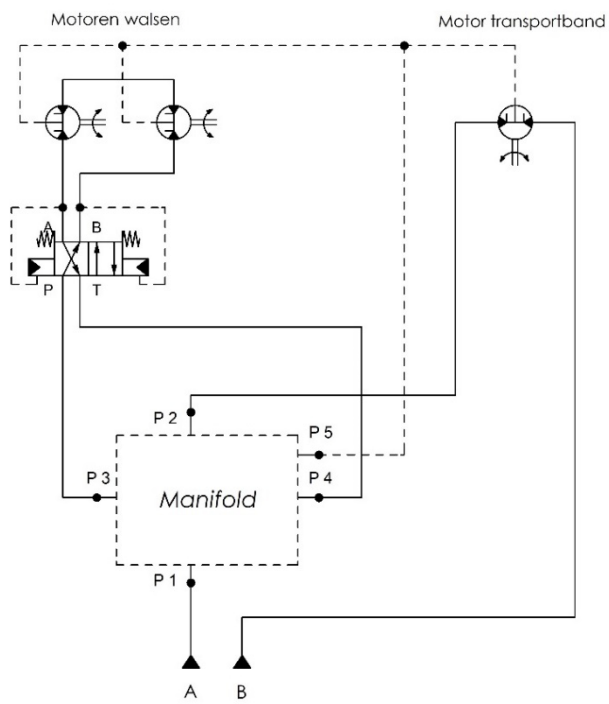
Shovel-linkage +30-100 kg

Spreading module +160-320 kg

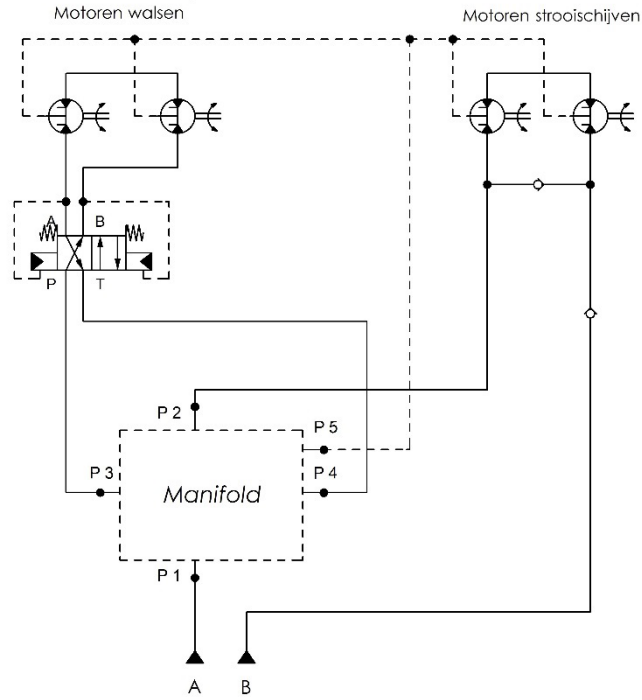
6 HYDRAULIC FLOW CHART



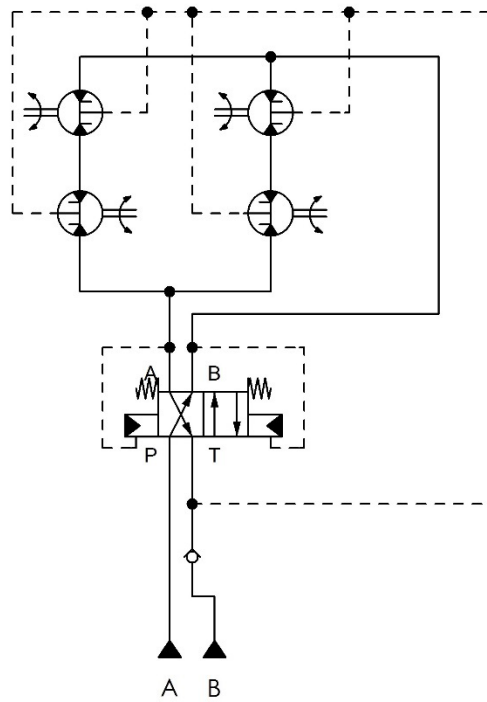
*Hydraulic flow chart SVV
Standard*



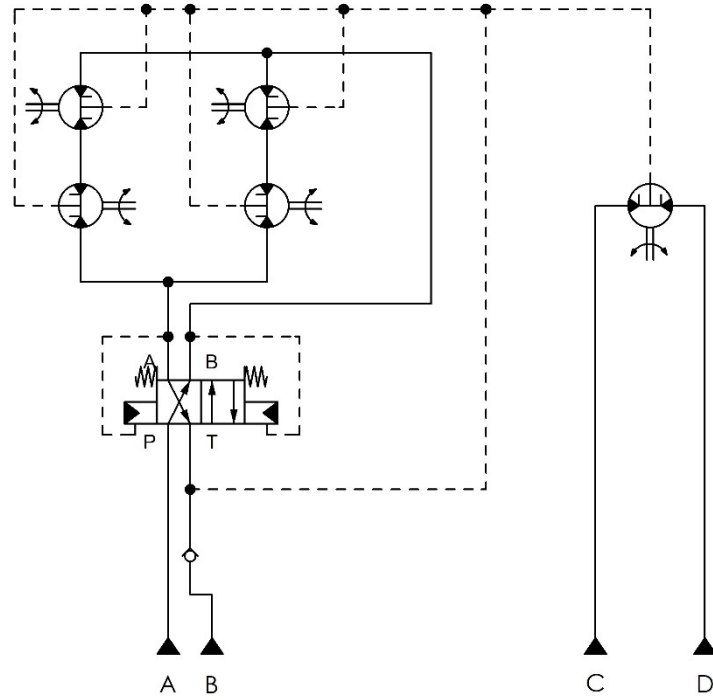
*Hydraulic flow chart SVV
with conveyor belt*



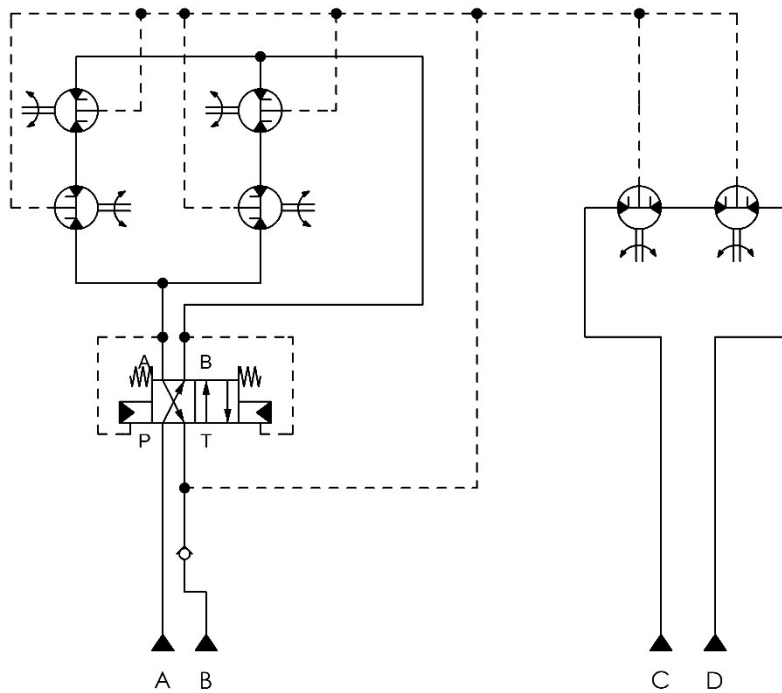
*Hydraulic flow chart SVV
with spreading discs*



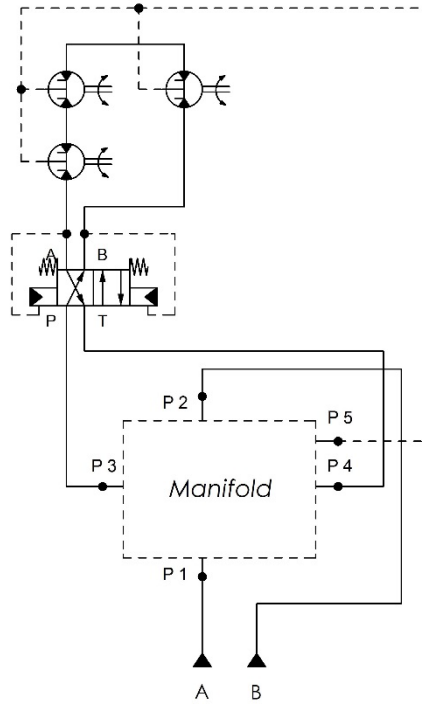
*Hydraulic flow chart SVV HD
Standard*



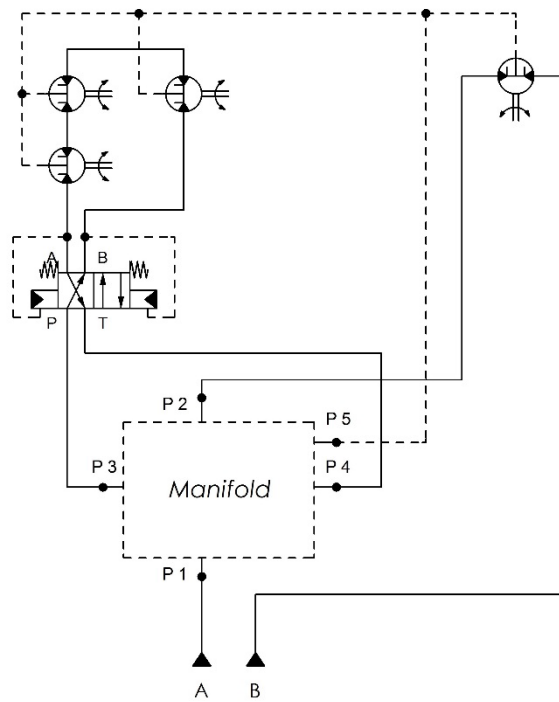
*Hydraulic flow chart SVV HD
with conveyor belt*



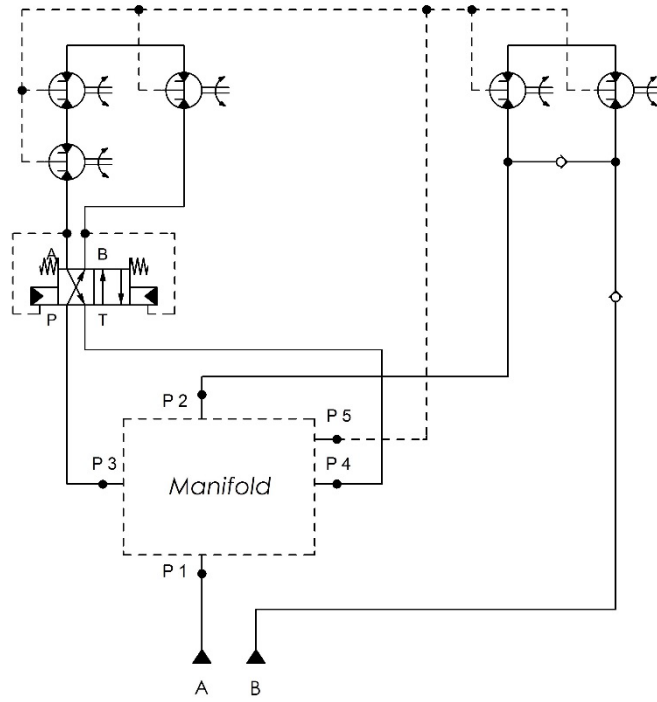
*Hydraulic flow chart SVV HD
with spreading discs*



*Hydraulic flow chart SVG
Standard*



*Hydraulic flow chart SVG
with conveyor belt*



*Hydraulic flow chart SVG
with spreading discs*

7 COMMISSIONING



The straw spreader may only be used by those which have read and understand the within this operator's manual specified and operating instructions. Only completely competent operators which know how to use the controls, the straw spreader's capabilities, dimensions and all safety requirements may operate the straw spreader.

Before using the straw spreader, check whether the combination of the straw spreader and connected machine is safe. Pay special attention towards the maximum lifting capacity and hydraulic power of the connected machine. The technical details of the straw spreader are indicated on the type/serial number plate or in the technical specifications (chapter 5) within this operator's manual.

For more information, whether the combination of straw spreader and connected machine is safe check also the operator's manual of the connected machine.

7.1 MOUNTING THE LINKAGE



Use only the linkage made and delivered by Flingk Machinebouw to connect the straw spreader and the machine.



Mount the linkage with the original fasteners delivered by Flingk Machinebouw.

The linkage should be mounted on the two square tubes that are welded on the straw spreader. The fixing materials are delivered with the linkage.

1. Turn the fasteners hand-tight, with the linkage at about the right place.
2. Measure, when needed, the size of the linkage.
3. Also measure the width to the outside of the mounting sleeves and make sure the size is the same on both sides so that the coupling is centred.
4. Tighten all fasteners, ensure that locknuts are used.
5. Eventual adjust the stop to the driving machine.
6. Before taking the machine in use, try to fit the linkage to the driving machine to ensure the connection fits properly.

7.2 COUPLING THE MACHINE

The straw spreader can be connected by means of the three-point linkage of a tractor or the quick coupler system. Follow depending on the type of connection the following instructions:

1. connection by means of a quick coupler system
2. connection by means of a three-point linkage

7.2.1 Connection by means of a quick coupler system



Before using the straw spreader, check whether the combination of the straw spreader and the connected machine is safe. Pay special attention towards the maximum lifting capacity and hydraulic power of the connected machine.



Make sure you never connect the drain line (red dust cap) at a pressure outlet!

Always check before connecting the straw spreader whether the connection on the straw spreader is appropriate for the connection on the machine.

Pay special attention towards the distance between the holes and pins both, horizontally and vertically as well as the diameters of the different holes and pins. Before connecting the straw spreader always check the operator's manual of the machine and/or of the quick coupler system.

1. The straw spreader should be placed in the horizontal position, with the mounting points facing upwards, on a firm and level surface.
2. Follow strictly the instructions as described within the operator's manual of the quick coupler system to attach the straw spreader towards the machine.
3. Check whether all connections are connected and secured properly.
4. Connect the hydraulic hoses. Connectors A and B (yellow/blue) should be coupled to the pressure ports on the connected machine (see hydraulic flow chart). Make sure the drain line is also connected well, it must not be pressurized during operation. Be aware and prevent unforeseen oil spills, think about the natural environment.
5. Check the movement and clearance of all hydraulic hoses, make sure they are of sufficient length and will not be wedged during operation.

7.2.2 Connection by means of a three-point linkage



Before using the straw spreader, check whether the combination of the straw spreader and the connected machine is safe. Pay special attention towards the maximum lifting capacity and hydraulic power of the connected machine.



Make sure you never connect the drain line (red dust cap) at a pressure outlet!

Always check before connecting the straw spreader whether the connection on the straw spreader is appropriate for the connection on the machine.

For connecting the Flingk straw spreader by means of a three-point linkage follow the next instructions:

1. The straw spreader should be placed in the upright position, with the mounting points facing forward, on a firm and level surface.
2. Make sure all connections are greased sufficiently before connecting the straw spreader.
3. To connect the straw spreader follow all instructions as provided within the operator's manual of the three-point linkage and/or the connected machine. Make sure you use the proper implements, these should fit accurately on the straw spreader.
4. Make sure all connections are secured properly.
5. Connect the hydraulic hoses. Connectors A and B (yellow/blue) should be coupled to the pressure ports on the connected machine (see hydraulic flow chart). Make sure the drain line is also connected well, it must not be pressurized during operation. Be aware and prevent unforeseen oil spills, think about the natural environment.
6. Check the movement and clearance of all hydraulic hoses, make sure they are of sufficient length and will not be wedged during operation.

8 OPERATING INSTRUCTIONS



Use the Flingk straw spreader only for the purpose for which the machine is designed and built.



The augers of the straw spreader contain razor-sharp blades. Stay with limbs away from the augers.

Before and while operating take the following instructions into account:

- Check prior to commencing work whether the safety decals are clean and can be read at all times, possible wear and tear of the entire straw spreader as well as the hydraulic hoses and presence of the yellow, blue and red dust caps on the connectors.
- Do not start working with an incomplete, damaged or dirty straw spreader!
- Check before every use if all blades are installed and whether it properly fastened. When this is not the case, there may not be started spreading.
- Check before every use if the augers can rotate freely and do not collide. This should be checked when the machine is empty and there is not any straw in the machine. When one or both augers do not turn freely, the entire machine has to be checked by your dealer.
- Check prior to commencing work the direction in which the conveyer belt rotates. This is depending on the manner in which the hydraulic hoses A and B (yellow/blue) are connected to the pressure ports.
- The straw spreader may solely be operated from the correct operator's position within the cabin of the attached machine.
- In case of stuck augers, place the straw spreader in the horizontal position on a firm and level surface, turn of the engine of the attached machine and make sure all hoses are depressurized before you attempt to loosen up the augers. Be aware for the sharp blades and make use of appropriate tooling to loosen material.
- Always consult the dealer or Flingk Machinebouw to check the straw spreader after a foreign object has caused the obstruction before starting operation again.
- Wear and use protective clothing and/or equipment while cleaning the straw spreader.

8.1 LOADING THE STRAW SPREADER

Het laden van de stroverdelers gebeurt in de horizontale positie. Door de machine voorover te kantelen kan er onder Loading the straw spreader takes place in the horizontal position. By tilting over the machine, a rectangular straw bale can be scooped (1). Make sure the cover (SVV 2500) is opened and the opening is free. The straw spreader should also be empty. Furthermore, make sure the straw spreader and the straw bale are aligned in a row, this ensures scooping is easier.

Push the straw spreader as far as possible on the straw bale (2). Fold the cover (SVV 2500) back and cut and remove the strings.

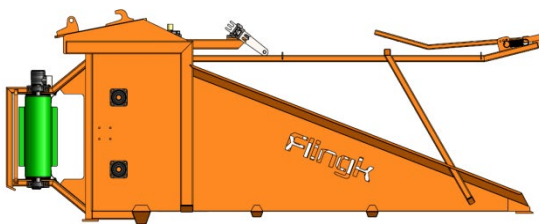
Then pull the straw spreader back to the vertical position (3).



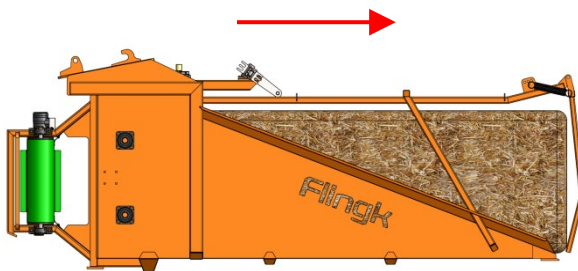
Remove all strings to prevent locking the augers. When a string is wrapped around an auger, immediately stop spreading and remove the string in a safe way.



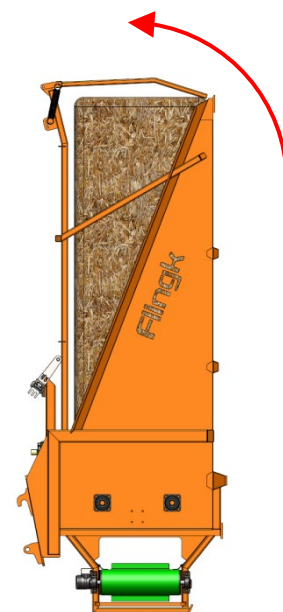
Make sure nobody stays between the straw spreader and the straw bale while loading the straw spreader.



1



2



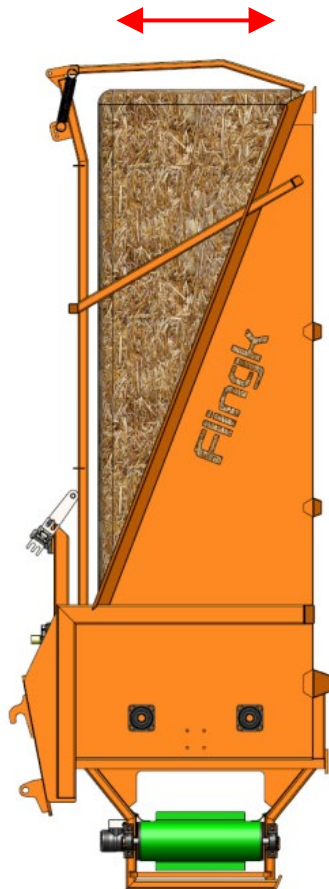
3

8.2 RIDING WITH THE STRAW SPREADER

Ensure that while driving straw spreader is always in the vertical position and close to the ground. This prevents possible imbalance and increases the sight around the machine. Make sure you have enough sight while driving with the straw spreader.



The straw spreader is solely designed for use on private terrain, do not use or drive with it on the public road. In case you want to transport the straw spreader always adhere to the traffic, safety and environmental regulations and transport the machine in a responsible and safe manner.



8.3 SPREADING



Avoid dangerous situations, keep distance from moving parts and as an operator make sure you always keep overview about what is inside the working area of the machine.



Make sure that no human being or animals are within the working area of the machine!

When spreading follow the next instructions:

- Always keep the straw spreader in the vertical position while spreading.
- Ensure that no human being, animals or other materials are within the operating zone before spreading the straw.
- Start spreading and keep a continuous engine speed, this provides a regular dosage of the straw.

When the augers rotate too heavy, the hydraulic system will automatically change the direction of the rotation of the augers. When the augers are likely to get stuck the hydraulic system will prevent this. If so unexpected the augers are blocked, place the straw spreader in the horizontal position on a firm and level surface. Turn off the engine of the driving machine and disconnect the hydraulic hoses before attempting to loosen the straw and the auger(s).



Beware of the blades, these are razor-sharp! For loosening the straw make use of appropriate tooling.

8.4 STORAGE OF THE STRAW SPREADER

Always store the straw spreader in the horizontal position! If the straw spreader is upright, it can be top-heavy and get imbalanced.

9 MAINTENANCE



Maintenance and repair practices may only be performed by skilled specialists and by using proper tooling.



Never attempt to work on or repair the straw spreader while it is running! All power sources must be completely disengaged and the straw spreader should be placed in the forward position on a firm, level surface that is large enough to safely accommodate the straw spreader while repairing, cleaning or maintenance.



Any work done on the hydraulic system should be done by Flingk Machinebouw or authorized dealers.



Make sure the Flingk straw spreader is not subjected to extreme weather conditions and always store the straw spreader in a sheltered area which prevents exposure to persistent rain, snow and ice.

General maintenance instructions:

- Regularly check the front blade for possible damages, wear or flaws.
- Regularly check the augers for possible damages or wear. The augers may not collide something.
- Check before every use if all blades are installed and whether it properly fastened.
- Check, in case of a spreading module with conveyor belt, regularly the belt for any damages or wear. Also check if the conveyor belt does not run lateral. How to solve it can be read in chapter 9.1 of this manual.
- Check, in case of a spreading module with discs, regularly the discs for any damages, wear or flaws. The spreading discs may not collide something.
- Regularly check the hydraulic system for any damages, wear or flaws. The outer casing of the hoses may not be damaged in any way.
- Grease all bearing every six months or every 30 machine hours. De bearings are at the outside of the axles of the augers (2 pieces for SVV, none for SVV HD, 3 pieces for SVG), on the other site than the hydraulic motors.
 - When a spreading module with conveyor belt is mounted, the bearings (3 pieces) should also be greased together with the bearings of the augers.
 - On the optional manual rope winding system are 2 bearings.
 - On the optional far spreading module is 1 bearing.

9.1 TIGHTENING THE CONVEYOR BELT

If a spreading module with conveyor belt is mounted, this has to be tightened as follows.

To tighten the conveyor belt, please follow the next instructions:



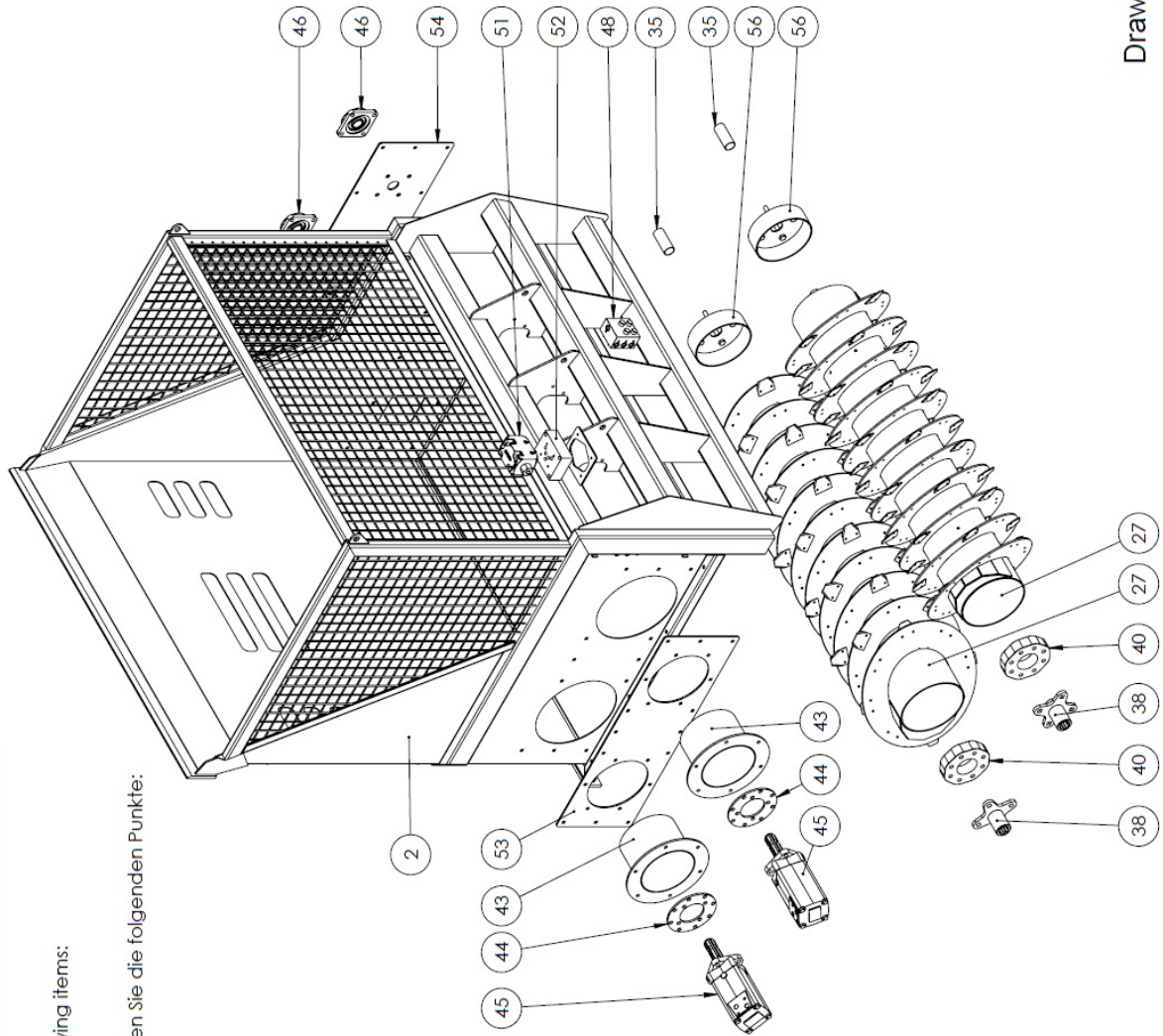
Tightening the conveyor belt only on the non-driven roller!

-
- The straw spreader should be placed in the horizontal position, with the mounting points facing upwards, on a firm and level surface.
 - Disconnect the straw spreader completely and make sure all hydraulic hoses are depressurized.
 - Adjust the conveyor belt tension bolts from the non-driven roller hand-tight. The conveyor belt must not be tightened.
 - Mark exactly 1000mm in length on the longitudinal direction of the conveyor belt and adjust the tension bolts in such a way that the conveyor belt is stretched to 1003mm. Both sides should be adjusted the same distance so the conveyor belt does not drag along the sides.
 - Always test after tightening and before use whether the conveyor belt does not drag along the sides and remains at the centre of the rollers.

10 PARTS LISTS

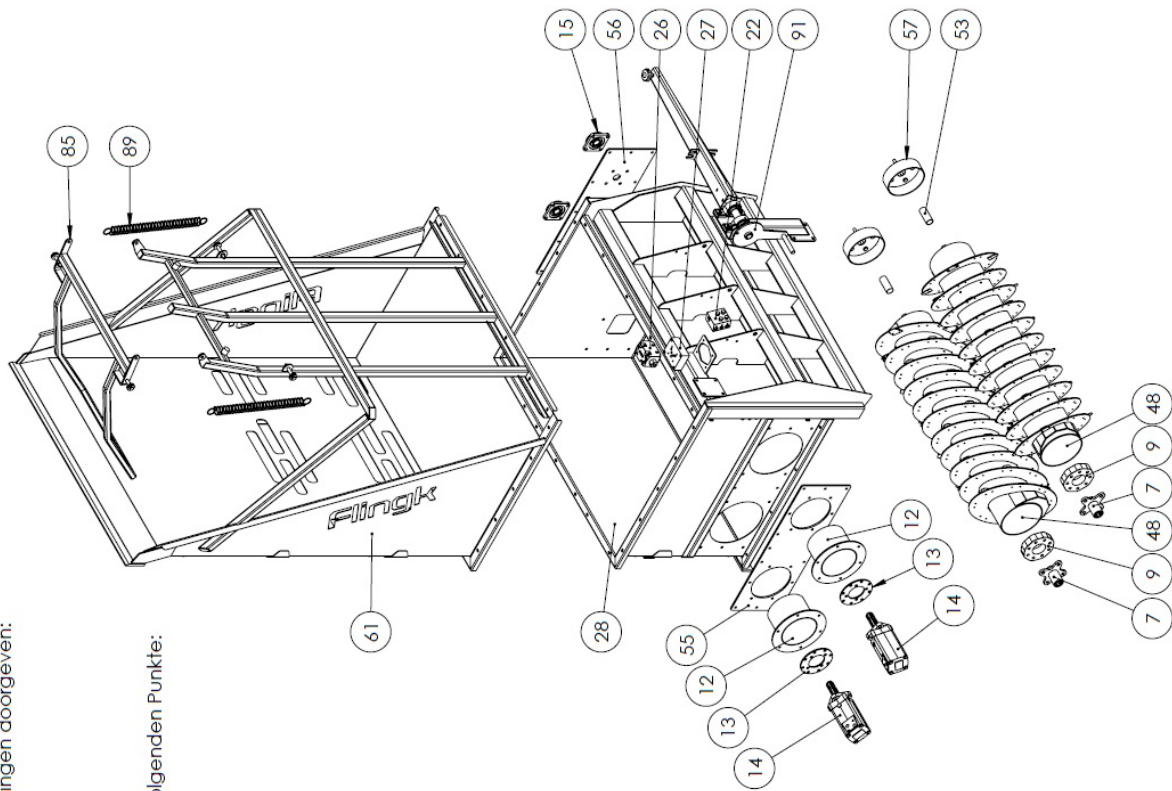
10.1 SVV 1000

- Bij het bestellen van onderdelen graag de volgende dingen doorgeven:
Het serienummer van de machine,
De naam van de tekening,
Het positiënummer in de tekening.
- When ordering parts, please give the following items:
The serial number of the machine,
The name of the drawing,
The item number in the drawing.
- Bei der Bestellung von Ersatzteile, bitte geben Sie die folgenden Punkte:
Seriennummer der Maschine,
Der Name der Zeichnung,
Die Positionsnummer in der Zeichnung.



Drawing: SVV 1000-01

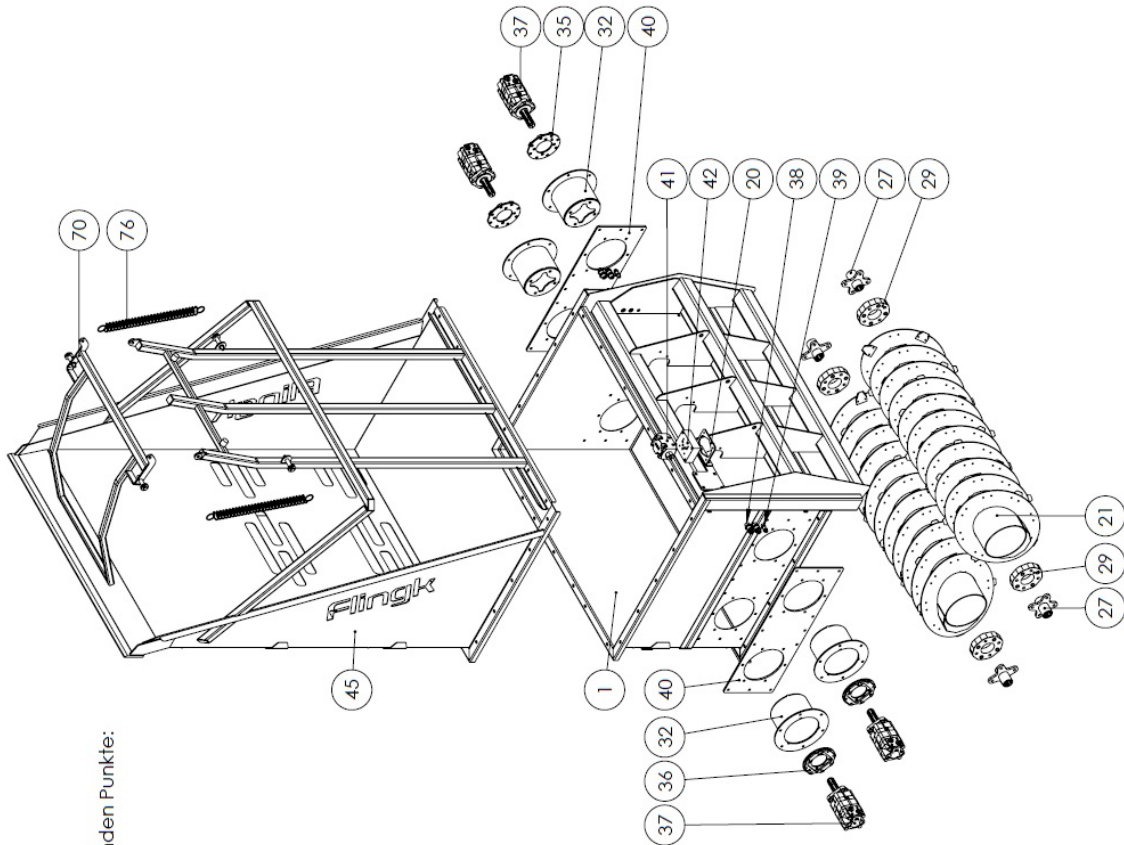
10.2 SVV 1250/2500



- Bij het bestellen van onderdelen graag de volgende dingen doorgeven:
Het serienummer van de machine,
De naam van de tekening.
- When ordering parts, please give the following items:
The serial number of the machine,
The name of the drawing.
- Bei der Bestellung von Ersatzteile, bitte geben Sie die folgenden Punkte:
Seriennummer der Maschine,
Der Name der Zeichnung,
Die Positionsnummer in der Zeichnung.

Drawing: SVV 1250+01

10.3 SVV 1250/2500 HD



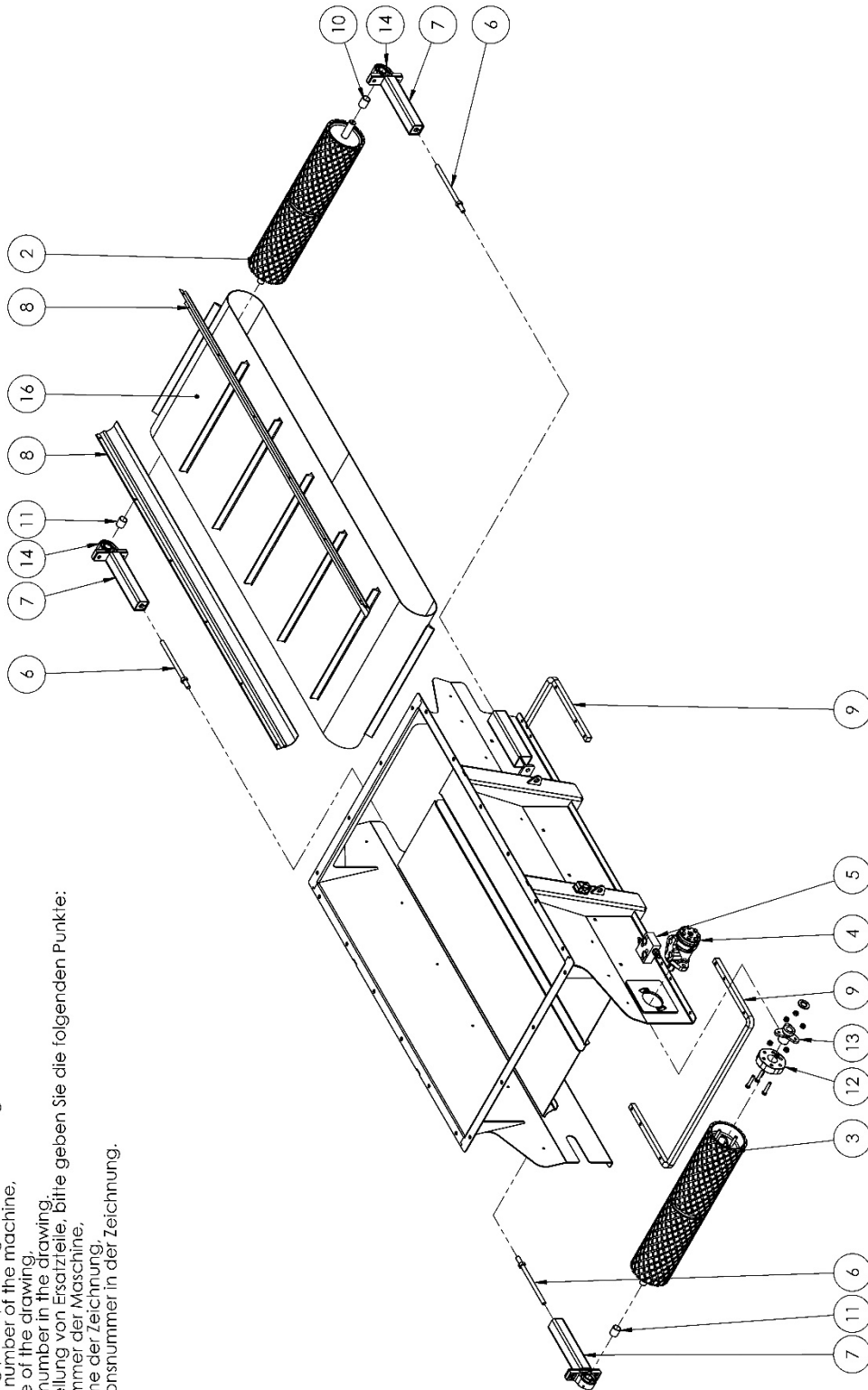
- Bij het bestellen van onderdelen graag de volgende dingen doorgeven:
Het serienummer van de machine,
De naam van de tekening.
- When ordering parts, please give the following items:
The serial number of the machine,
The name of the drawing.
- Bei der Bestellung von Ersatzteile, bitte geben Sie die folgenden Punkte:
Seriennummer der Maschine,
Der Name der Zeichnung,
Die Positionsnummer in der Zeichnung.

Drawing: SWVHD 01

10.4 SVG 1250/2500

10.5 SPREADING MODULE CONVEYOR BELT

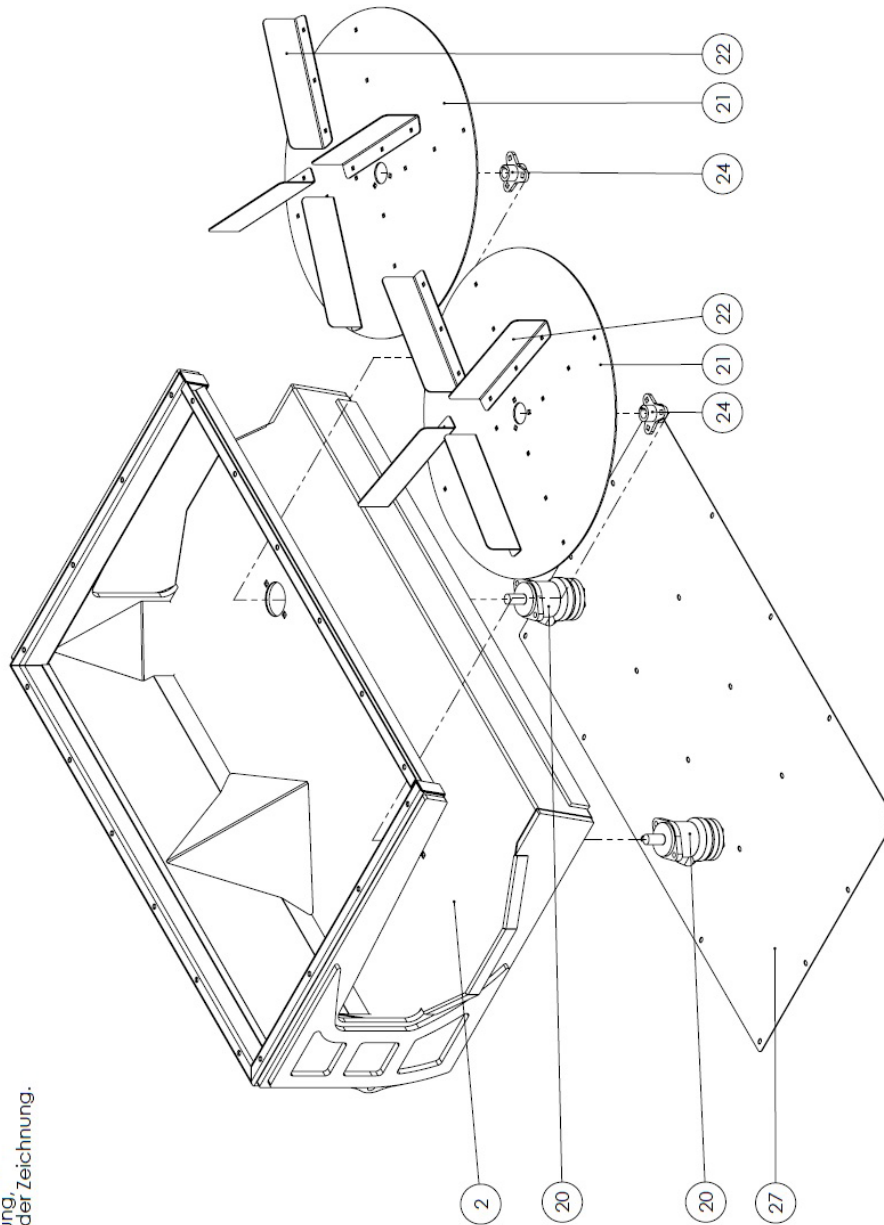
- Bij het bestellen van onderdelen graag de volgende dingen doorgeven:
Het serienummer van de machine,
De naam van de tekening,
Het positiënummer in de tekening.
- When ordering parts, please give the following items:
The serial number of the machine,
The name of the drawing,
The item number in the drawing.
- Bei der Bestellung von Ersatzteile, bitte geben Sie die folgenden Punkte:
Der Seriennummer der Maschine,
Der Name der Zeichnung,
Die Positionsnummer in der Zeichnung.



Drawing: Module transportband 01

10.6 SPREADING MODULE SPREADING DISCS

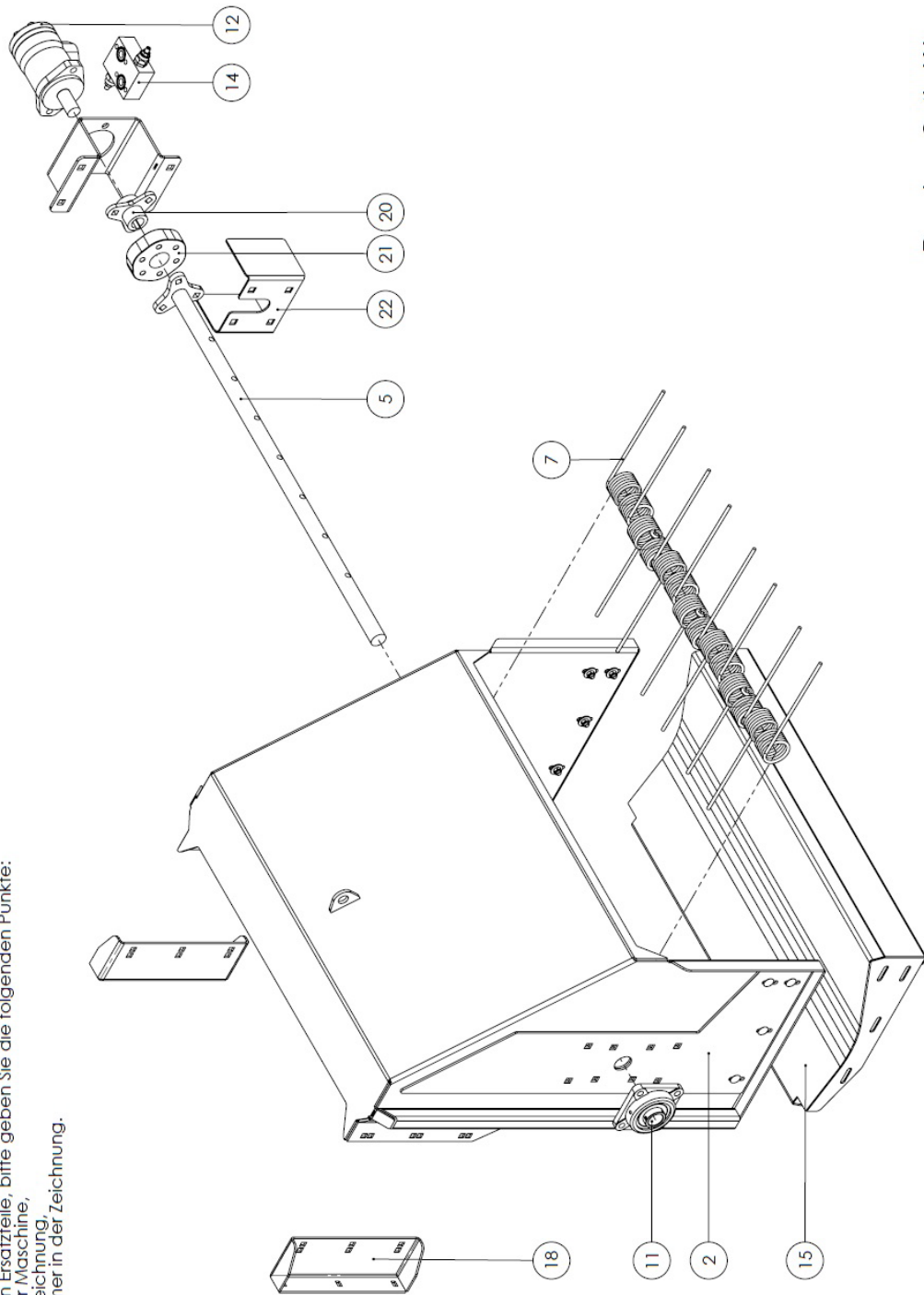
- Bij het bestellen van onderdelen graag de volgende dingen doorgeven:
Het serienummer van de machine,
De naam van de tekening.
- Het positiënummer in de tekening.
- When ordering parts, please give the following items:
The serial number of the machine,
The name of the drawing.
- Bei der Bestellung von Ersatzteile, bitte geben Sie die folgenden Punkte:
Seriennummer der Maschine,
Der Name der Zeichnung,
Die Positionsnummer in der Zeichnung.



Drawing: Module strooischijven SVV/SVG 02

10.7 OPTION FAR SPREADING FOR CONVEYOR BELT

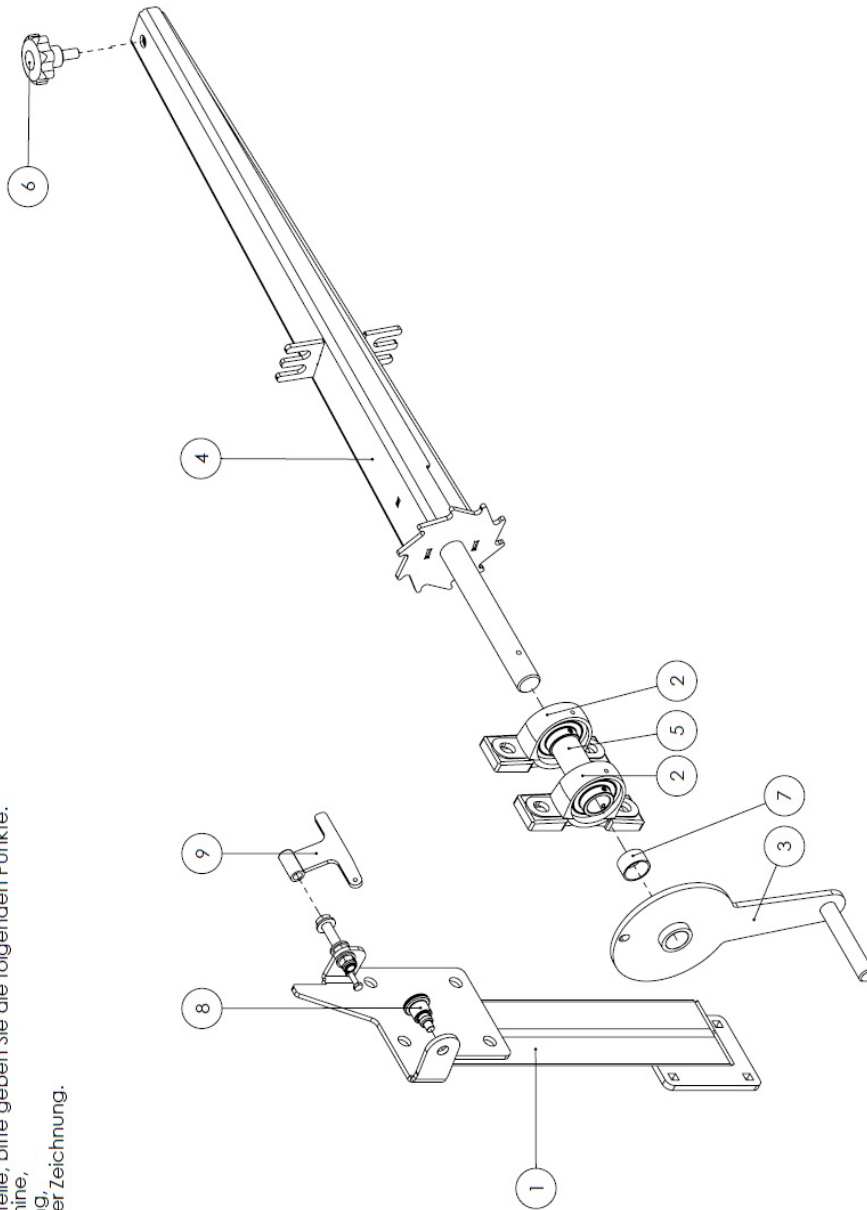
- Bij het bestellen van onderdelen graag de volgende dingen doorgeven:
Het serienummer van de machine,
De naam van de tekening,
Het positiënummer in de tekening.
- When ordering parts, please give the following items:
The serial number of the machine,
The name of the drawing,
The item number in the drawing.
- Bei der Bestellung von Ersatzteile, bitte geben Sie die folgenden Punkte:
Seriennummer der Maschine,
Der Name der Zeichnung,
Die Positionsnummer in der Zeichnung.



Drawing: Optie Werprad 01

10.8 OPTION MANUAL WINDING SYSTEM FOR ROPES

- Bij het bestellen van onderdelen graag de volgende dingen doorgeven:
Het serienummer van de machine,
De naam van de tekening,
Het positiënummer in de tekening.
- When ordering parts, please give the following items:
The serial number of the machine,
The name of the drawing,
The item number in the drawing.
- Bei der Bestellung von Ersatzteile, bitte geben Sie die folgenden Punkte:
Seriennummer der Maschine,
Der Name der Zeichnung,
Die Positionsnummer in der Zeichnung.



Drawing: Optie Oprolsysteem 01

11 WARRANTY CONDITIONS

Unless mentioned otherwise, the guarantee conditions as indicated within the METAALUNIE CONDITIONS, formerly referred to as the SMECOMA CONDITIONS, as published by the Koninklijke Metaalunie will be applied.

The clauses below are taken from this METAALUNIE CONDITION as issued by the Koninklijke Metaalunie in 2019.

Article 14: Warranty and other claims

- 14.1 Unless otherwise agreed in writing, the Contractor guarantees the proper execution of the agreed performance for a period of six months after delivery or completion, as detailed in the following paragraphs.
- 14.2 If the parties have agreed to deviating guarantee conditions, the provisions of this article will remain in full force, unless this is in conflict with those deviating guarantee conditions.
- 14.3 If the agreed performance has not been executed properly, the Contractor will decide within a reasonable period of time whether it will still perform the work properly or credit the Client for a proportionate part of the contract amount.
- 14.4 If the Contractor opts to still execute the performance properly, it will determine the manner and time of execution. The Client must in all cases offer the Contractor the opportunity to do so. If the agreed performance (also) included the processing of material provided by the Client, the Client must supply new material at its own expense and risk.
- 14.5 The Client is responsible for sending parts or materials that are to be repaired or replaced by the Contractor to the Contractor's business location.
- 14.6 The following are for the Client's account:
- a. all transport or shipping costs;
 - b. costs for dismantling and assembly;
 - c. and subsistence expenses and travel time.
- 14.7 The Contractor is only obliged to implement the guarantee if the Client has fulfilled all its obligations.
- 14.7 a. The guarantee does not cover defects that are the result of:
- normal wear and tear;
 - improper use;
 - lack of maintenance or maintenance carried out incorrectly;
 - installation, assembly, modification or repairs carried out by the Client or third parties;
 - faulty or unsuitable goods originating from or prescribed by the Client;
 - faulty or unsuitable materials or tools used by the Client.
- b. No guarantee is given for:
- goods delivered that were not new at the time of delivery;

- inspections and repairs carried out on goods owned by the Client;
- parts that are subject to a manufacturer's guarantee.

14.8 The provisions of paragraphs 3 to 8 of this article apply by analogy to any of the Client's claims based on breach of contract, non-conformity or any other basis whatsoever.

FLINGK

Machinebouw

