

# FLINGK

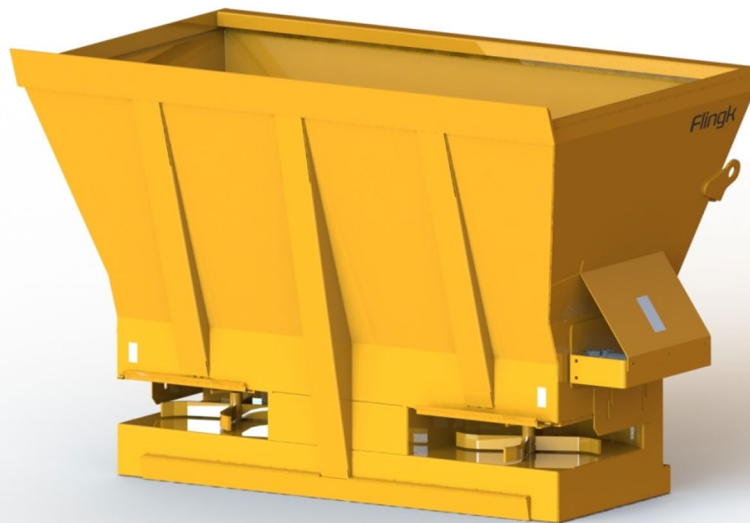
Machinebouw

## Wide spreader

Type BS

### Operator's manual ENG

Read carefully before use



Manufactured by: Flingk Machinebouw B.V.

Flingk Machinebouw B.V.  
Retselseweg 11A  
5473 HC Heeswijk-Dinther  
The Netherlands

Tel: +31(0)85-0685613  
info@flingk.com  
www.flingk.com

All rights reserved. No part of this book may be reproduced, stored in a database or retrieval system, or published, in any form or any way, electronically, optically, by print, or any other means, without prior written permission from Flingk Machinebouw B.V.

Version: V01.50

First publication: 26 April 2021

Full translation of the original Dutch version.

---

## PREFACE

The BS wide spreader from Flingk Machinebouw is a high-quality and durable machine with which you can spread a ground cover in your poultry house very evenly, quickly and efficiently.

Please read this instruction manual carefully before using the machine and follow the instructions. This not only guarantees a well-functioning and efficient machine, but also prevents unexpected damage and/or personal injury.

The machine is CE marked and complies with all relevant European safety regulations. Nevertheless, it is essential that you observe the safety instructions stated in this operating manual and in the operating manual of the driving vehicle when using, maintaining or repairing.

Flingk Machinebouw strives for a continuous product improvement. For this reason, it reserves the right to make changes at any time without obligations with respect to previously delivered machines.

If you still have questions after reading this operating manual, call your dealer or supplier.

Flingk Machinebouw wishes you a pleasant use!

Your supplier:



## GENERAL SAFETY PRECAUTIONS

The Flingk wide spreader may only be used by those persons which have read and understand the within this operator's manual specified safety and operating instructions. Only completely competent operators which know how to use the controls, the wide spreader's capabilities, dimensions and all safety requirements may operate the wide spreader.

Before using the wide spreader, check whether the combination of the wide spreader and connected machine is safe. Pay special attention towards the maximum lifting capacity and hydraulic power of the connected machine.

Before assembling the wide spreader on the driving machine, check whether the combination of the wide spreader and the driving machine is safe. Pay particular attention to the maximum lifting and hydraulic power of the driving machine.

The Flingk wide spreader is suitable for spreading different bedding materials. Only use the wide spreader solely for distributing bedding materials described in the technical specifications.

Use the wide spreader only for the purposes for which it was designed! Nobody, no persons, animals or other goods shall ride on/in the wide spreader during transport and/or operation.

The wide spreader is solely designed for use on private terrain, do not use or drive with it on the public road. In case you want to transport the wide spreader always adhere to the traffic, safety and environmental regulations and transport the machine in a responsible and safe manner.

Take care that nobody will be within the dangerous zone while operating, transporting or riding with the wide spreader. As an operator always ensure that nobody is within the reach of moving parts, within the operating area, or within close proximity of the machine while working.

Make sure nobody stays between the wide spreader and the bedding material while loading the wide spreader.

Maintenance and repair practices may only be performed by skilled specialists. Any work done on the hydraulic system should be done by Flingk Machinebouw or authorized dealers.

Never attempt to work on or repair the wide spreader while it is running! All power sources must be completely disengaged and the wide spreader should be placed in the tilted position on a firm, level surface that is large enough to safely accommodate the wide spreader while repairing, cleaning or adjusting.

Never leave the connected machine unattended while the engine is running. Always place the wide spreader in the tilted position on a firm, level surface which is large enough to safely accommodate the wide spreader after use.



EG-DECLARATION OF CONFORMITY  
according to annex II A of EC Machinery Directive 2006/42/EC

Manufacturer: Flingk Machinebouw B.V.  
Located: Retselseweg 11A  
5473 HC Heeswijk-Dinther  
The Netherlands

hereby declares that the following machinery

**Flingk wide spreader type: BS**

with the serial number effective from

**Serial No. 87-19-3066**

fulfils all of the relevant requirements of the EC Machinery Directive 2006/42/EG.

's-Hertogenbosch, 10 May 2016

On behalf of Flingk Machinebouw B.V.,

Dhr. Ing. N.C.W van den Berselaar

A handwritten signature in blue ink, appearing to be 'N.C.W. van den Berselaar', written over a faint circular stamp.

If any significant changes are made to this machine that could affect its safety or compliance with the regulations, its conformity must be reassessed and confirmed before the machine is put back into service.

TABLE OF CONTENT

Preface.....	3
General safety precautions .....	4
1 Safety instructions.....	7
1.1.1 Working range .....	9
2 Name plate details .....	10
3 Lifting instructions.....	11
4 Product description.....	12
5 Technical specifications.....	12
6 Hydraulic flow chart .....	13
7 Commissioning.....	16
7.1 Mounting the linkage .....	16
7.2 Coupling the machine.....	17
7.2.1 Connection by means of a quick coupler system .....	17
7.2.2 Connection by means of a three-point linkage .....	17
7.3 Adjusting side slides .....	19
7.3.1 BS 900 .....	19
7.3.2 BS 1000-3000.....	19
7.4 Adjusting metering slide(s).....	21
8 Operating instructions .....	22
8.1 Loading the wide spreader.....	23
8.2 Riding with the wide spreader .....	23
8.3 Spreading.....	24
9 Maintenance .....	25
10 Parts lists .....	26
10.1 BS 900.....	26
10.2 BS 1000-3000.....	27
11 Warranty conditions .....	28
12 Notes .....	31

## 1 SAFETY INSTRUCTIONS

Read all safety decals and safety statements in all manuals prior to operating or working with this equipment.



### **DANGER!**

**This symbol by itself or with a warning word throughout this manual is used to call your attention to instructions involving your personal safety or the safety of others. Failure to follow these instructions can result in injury or death.**

The machine has been marked with safety decals without text. For a safe use of the wide spreader make sure you understand and follow up the instructions on these decals. What is the danger, in which place does the danger occur and, very important, which safety instructions must be taken?

Be careful and be aware of the risks that are associated with the use of the wide spreader! The meaning of the decals are shown below.

- Carefully read the operator's manual before handling the machine. Observe instructions and safety rules when operating.



- Stop engine and ensure it cannot be re-started during performance of work on the machine.



- High pressure fluid hazard! Hydraulic fluid under pressure can penetrate the skin and cause serious injury or death. Always work warily and make sure all hoses and pipes are depressurized during maintenance and repair.



- Use the wide spreader only for the purposes for which it was designed! Nobody, no persons, animals or other goods shall ride on/in the wide spreader or be transported by the machine in any case.



- Attention moving parts! Stay clear of rotating and moving parts. Maintain a safe distance and make sure nobody is able to come in contact with the moving parts while operating. Never attempt to work on or repair the wide spreader while it is connected to the power source.



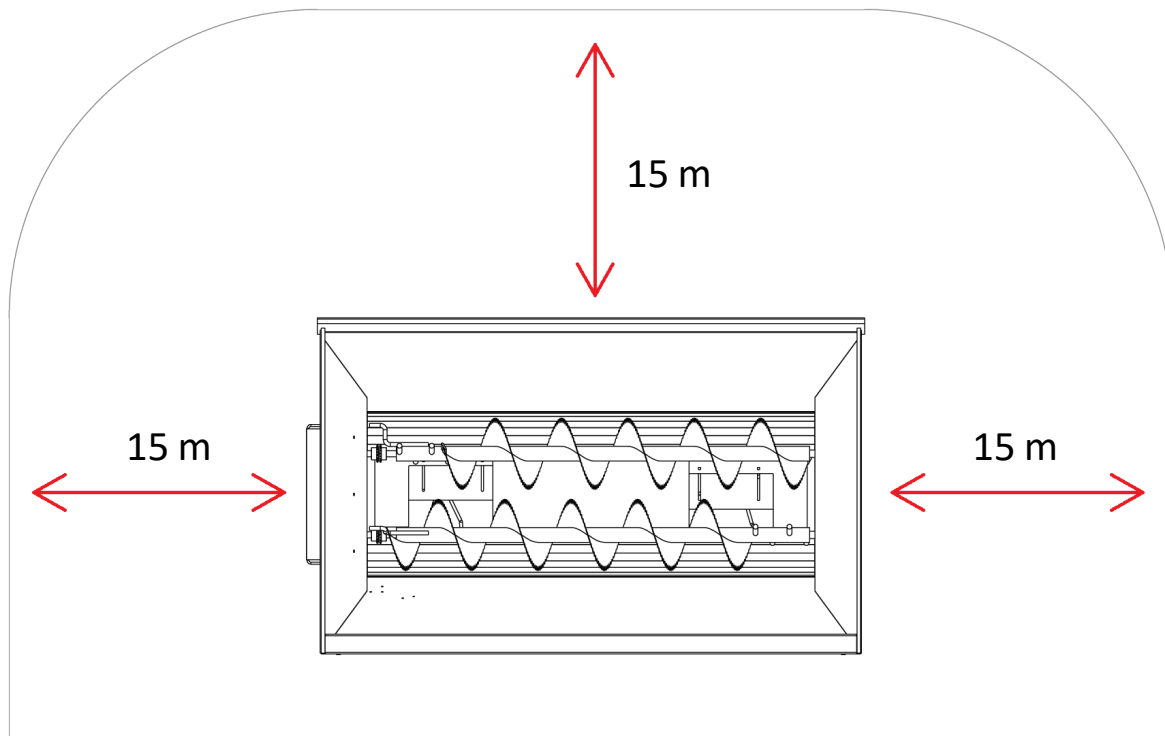
- Danger for crushing! When connecting the wide spreader, make sure nobody is between the wide spreader and the machine.



- Attention flying objects! Stay clear of the machine and keep out the spreading range of the machine.



**1.1.1 Working range**



**Make sure that no one, no people or animals, is within the spreading range of the machine during operation! See the image for the minimum free space.**

2 NAME PLATE DETAILS

The name plate of the wide spreader is located at the front side of the machine, right above the machine’s linkage. Complete the text below with the corresponding numbers on the nameplate.



- A. Machine : .....
- B. Type : .....
- C. Serial number : .....
- D. Year of build : .....
- E. Weight : .....
- F. F1 Max. flow ( $Q_{max}$ ) [l/min] : .....
- G. F1 Max. pressure ( $P_{max}$ ) [bar] : .....
- H. F2 Max. flow ( $Q_{max}$ ) [l/min] : .....
- I. F2 Max. pressure ( $P_{max}$ ) [bar] : .....
- J. Voltage [V] : .....
- K. Current [A] : .....

### 3 LIFTING INSTRUCTIONS

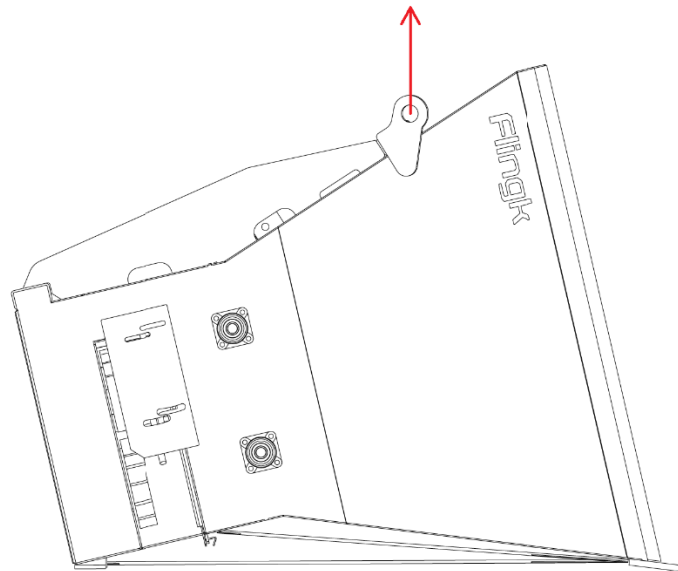
To move the Flingk wide spreader without being connected to a suitable machine, use the two lifting eyes as shown in the drawing below.

Hoist the machine gradually and with policy to avoid imbalance.



**Ensure that persons and animals are at a safe distance during hoisting!  
During hoisting, the machine may become unbalanced, causing it to swing away.**

Check before lifting whether the lifting capacity of the equipment used is able to hold the total weight of the wide spreader. The total weight of the wide spreader is indicated on the type/serial plate as well as under the technical specifications within chapter 5 of this operator's manual. The mass specified there is excluding attachments or any options.



#### 4 PRODUCT DESCRIPTION

The Flingk wide spreader is a high-quality machine with which you can spread different bedding materials very evenly over a large width quickly and efficiently. The spreader is available in various volumes, these can be found in chapter 5 of this manual.

2 augers at the bottom of the machine prevent bridging and transport the bedding material towards the openings. The openings can be made larger or smaller by means of adjustable slides to dose the bedding material. Depending on the model, the machine is equipped with 1 or 2 spreading discs that throw away the bedding material.

#### 5 TECHNICAL SPECIFICATIONS

The Flingk wide spreader is designed for distributing different bedding materials. The table below provides an overview of the different types with their according technical specifications as well as the types of bedding materials. The bedding materials are abbreviated as follows:

Z	Sawdust
GS	Crushed straw
HS	Chopped straw
SP	Straw pellets
T	Peat
HK	Wood shavings

##### *Technical specifications Flingk wide spreader **Type BS***

Volume	BS 900	BS 2000	BS 3000
Bedding material <sup>1</sup>	Z,GS,SP,T,HK	Z,GS,HS,SP,T,HK	Z,GS,HS,SP,T,HK
Number of spreading discs	1	2	2
Width (mm)	1505	2260	2560
Content (l)	900	2000	3000
Weight <sup>2</sup> (kg)	330	580	740
Max. loading weight	400	1000	1200
Max. system pressure (bar)	175	175	175
Max. peak pressure (bar)	225	225	225
Minimum required oil flow	25 L/min	40 L/min	40 L/min

<sup>1</sup> The meaning of the abbreviations are described in the beginning of chapter 5 of this manual.

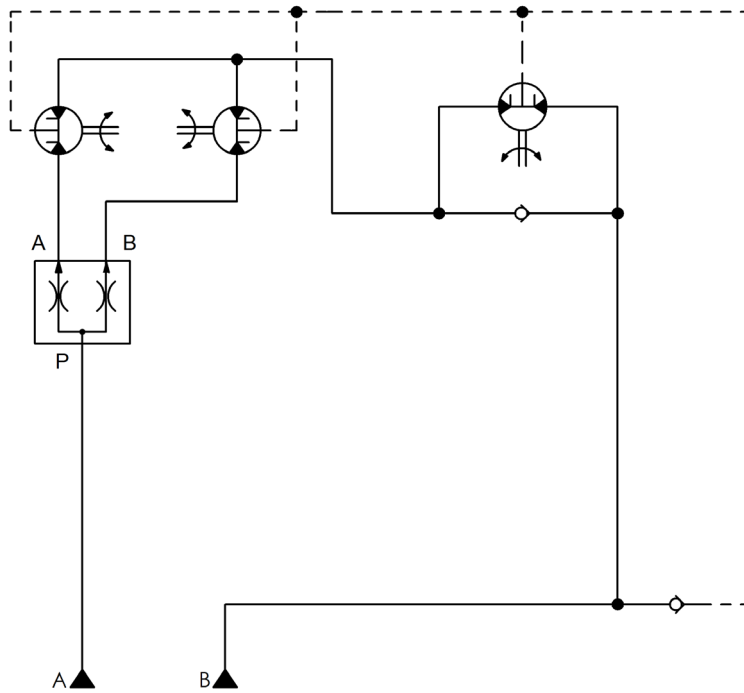
<sup>2</sup> Weight exclusive linkage, weight may vary depending on the version of the machine and linkage.

Shovel-linkage +30-100 kg

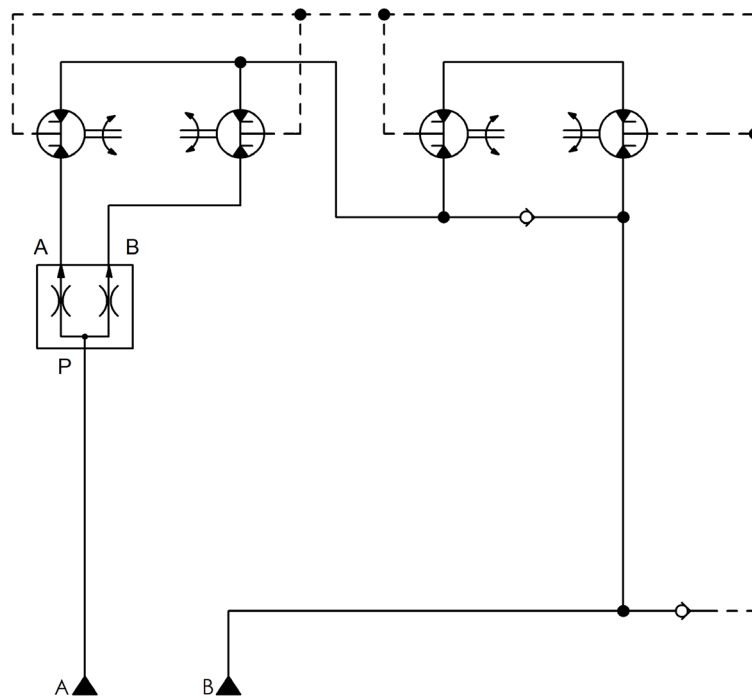
Three-point linkage single cylinder +30-100 kg

Three-point linkage double cylinder +150 kg

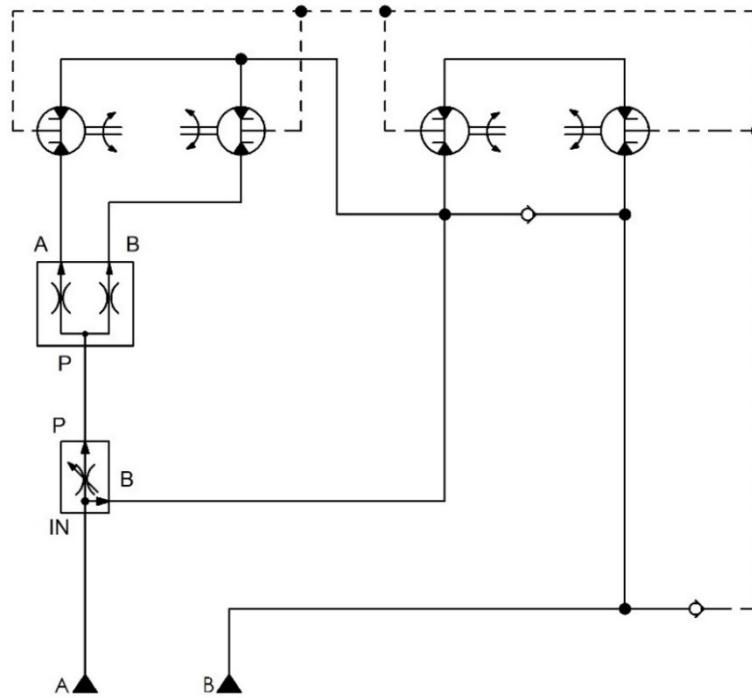
6 HYDRAULIC FLOW CHART



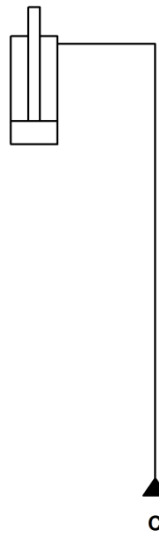
*Hydraulic flow chart BS 900  
Standard*



*Hydraulic flow chart BS 1000-3000  
Standard*

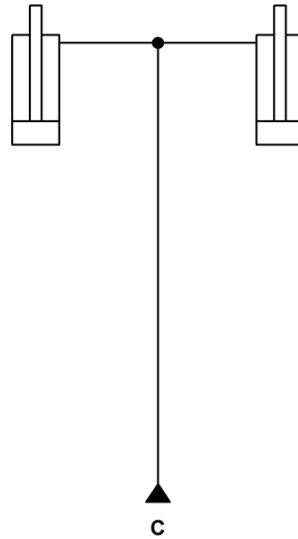


*Hydraulic flow chart (BS 1000-3000)  
Adjustable speed rollers*



*Hydraulic flow chart three-point linkage<sup>3</sup>  
Single cylinder*

<sup>3</sup> In case of an 'additional valve' both; the tractor linkage and the wide spreader hydraulics are connected after the manifold. In this case only 1 double regulating valve is required.



*Hydraulic flow chart three-point linkage<sup>4</sup>  
Double cylinder*



**After maintenance or repair practices on the wide spreader always make sure that the rollers rotate in opposite directions.**



**Before maintenance of the hydraulic system disconnect the hoses of the connected machine and make sure that the hoses are depressurized!**

<sup>4</sup> In case of an 'additional valve' both; the tractor linkage and the wide spreader hydraulics are connected after the manifold. In this case only 1 double regulating valve is required.

## 7 COMMISSIONING



**The wide spreader may only be used by those which have read and understand the within this operator's manual specified and operating instructions. Only completely competent operators which know how to use the controls, the wide spreader's capabilities, dimensions and all safety requirements may operate the wide spreader.**

Before using the wide spreader, check whether the combination of the wide spreader and connected machine is safe. Pay special attention towards the maximum lifting capacity and hydraulic power of the connected machine. The technical details of the wide spreader are indicated on the type/serial number plate or in the technical specifications (chapter 5) within this operator's manual.

For more information, whether the combination of wide spreader and connected machine is safe check also the operator's manual of the connected machine.

### 7.1 MOUNTING THE LINKAGE



**Use only the linkage made and delivered by Flingk Machinebouw to connect the wide spreader and the machine.**



**Mount the linkage with the original fasteners delivered by Flingk Machinebouw.**

The linkage should be mounted on the two square tubes that are welded on the wide spreader. The fixing materials are delivered with the linkage.

1. Turn the fasteners hand-tight, with the linkage at about the right place.
2. Measure, when needed, the size of the linkage.
3. Also measure the width to the outside of the mounting sleeves and make sure the size is the same on both sides so that the coupling is centred.
4. Tighten all fasteners, ensure that locknuts are used.
5. Eventual adjust the stop to the driving machine.
6. Before taking the machine in use, try to fit the linkage to the driving machine to ensure the connection fits properly.

## 7.2 COUPLING THE MACHINE

The wide spreader can be connected by means of the three-point linkage of a tractor or the quick coupler system. Follow depending on the type of connection the following instructions:

1. connection by means of a quick coupler system
2. connection by means of a three-point linkage

### 7.2.1 Connection by means of a quick coupler system



**Before using the wide spreader, check whether the combination of the wide spreader and the connected machine is safe. Pay special attention towards the maximum lifting capacity and hydraulic power of the connected machine.**



**Make sure you never connect the drain line (red dust cap) at a pressure outlet!**

Always check before connecting the wide spreader whether the connection on the wide spreader is appropriate for the connection on the machine.

Pay special attention towards the distance between the holes and pins both, horizontally and vertically as well as the diameters of the different holes and pins. Before connecting the wide spreader always check the operator's manual of the machine and/or of the quick coupler system.

1. The wide spreader should be placed in the tilted, horizontal position, with the mounting points facing upwards, on a firm and level surface.
2. Follow strictly the instructions as described within the operator's manual of the quick coupler system to attach the wide spreader towards the machine.
3. Check whether all connections are connected and secured properly.
4. Connect the hydraulic hoses. Connectors A and B (yellow/blue) should be coupled to the pressure ports on the connected machine (see hydraulic flow chart). Make sure the drain line is also connected well, it must not be pressurized during operation. Be aware and prevent unforeseen oil spills, think about the natural environment.
5. Check the movement and clearance of all hydraulic hoses, make sure they are of sufficient length and will not be wedged during operation.

### 7.2.2 Connection by means of a three-point linkage



**Before using the wide spreader, check whether the combination of the wide spreader and the connected machine is safe. Pay special attention towards the maximum lifting capacity and hydraulic power of the connected machine.**



**Make sure you never connect the drain line (red dust cap) at a pressure outlet!**

Always check before connecting the wide spreader whether the connection on the wide spreader is appropriate for the connection on the machine.

For connecting the Flingk wide spreader by means of a three-point linkage follow the next instructions:

1. The wide spreader should be placed in the tilted, horizontal position, with the mounting points facing forward, on a firm and level surface.
2. Make sure all connections are greased sufficiently before connecting the wide spreader.
3. To connect the wide spreader follow all instructions as provided within the operator's manual of the three-point linkage and/or the connected machine. Make sure you use the proper implements, these should fit accurately on the wide spreader.
4. Make sure all connections are secured properly.
5. Connect the hydraulic hoses. Connectors A and B (yellow/blue) should be coupled to the pressure ports on the connected machine (see hydraulic flow chart). Make sure the drain line is also connected well, it must not be pressurized during operation. Be aware and prevent unforeseen oil spills, think about the natural environment.
6. Check the movement and clearance of all hydraulic hoses, make sure they are of sufficient length and will not be wedged during operation.

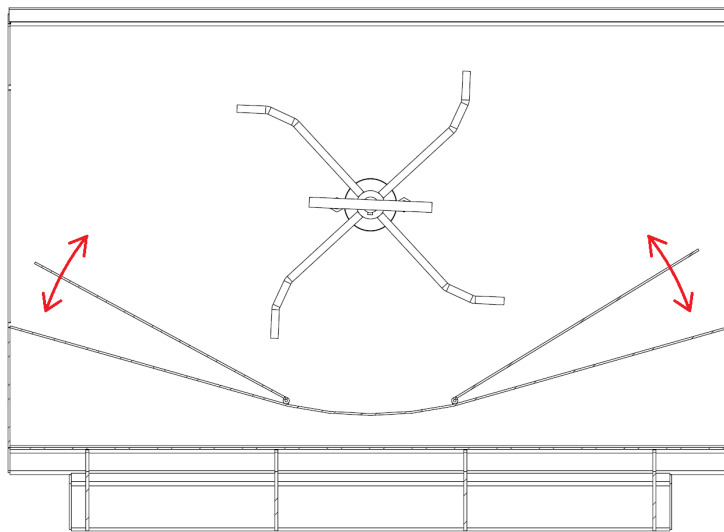
## 7.3 ADJUSTING SIDE SLIDES

### 7.3.1 BS 900

With type BS 900, the spreading pattern can be adjusted over the width by changing two adjustable plates in angle. This can be done by loosening the nuts a few of turns so that the plates can move. Change the angle until the desired position is reached. Then tighten the nuts sufficiently so the plates will remain in the correct position during use.



**The adjustment of the side slides depends on the situation and on the bedding material and can be different depending on the situation.**



### 7.3.2 BS 1000-3000

With types BS 1000 to BS 3000, there are sliders mounted on both sides along the spreading discs. These sliders can be adjusted in height, the angle can also be adjusted.

The slides can be adjusted by loosening the nuts or star knobs a few turns so that the slide can be adjusted. Then move the slider to the desired position. Finally tighten the nuts or star knobs sufficiently so that the sliders will remain their position during use.

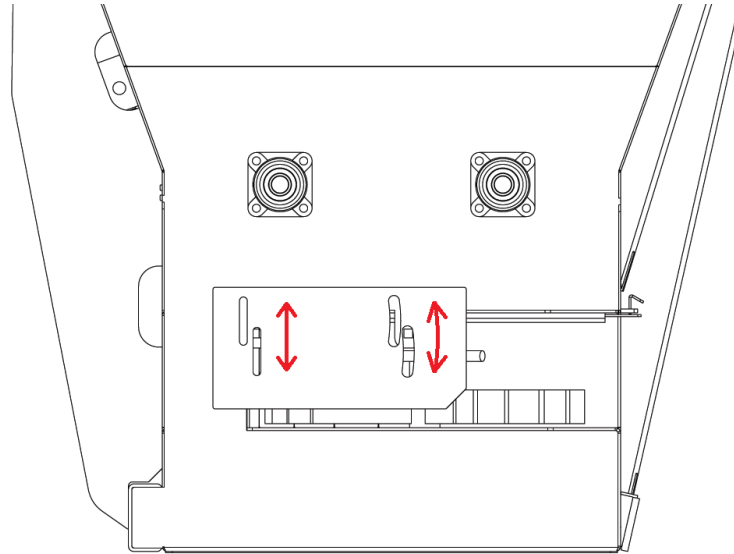
When the slider is in the lower position, the machine will be less spreading to the sides. The further the slide is placed upwards, the more bedding material will be dosed on the side.

The adjustment of the slide is different for each situation and depends very much on the setting of the bottom plates (chapter 7.4) and on the bedding material to be spread.

The machine is delivered with spreading discs that turn 'taking'. In case of light material such as sawdust, too much material can then be spread to the centre. When this happens, the spreading discs can be swapped (BS 1000 to 3000).



The adjustment of the side slides depends on the situation and on the bedding material and can be different depending on the situation.



#### 7.4 ADJUSTING METERING SLIDE(S)

At the bottom of the wide spreader, under the augers, above the spreading disc(s), a removable slide is placed. These are confirmed with a lock clip. The model of the slide depends on the design and may be different from the image.

By moving the slides, and thereby making the hole under the augers larger or smaller, more or less bedding material will be dosed. This will change the spreading pattern and the thickness of the layer of bedding material. The position of the hole also affects the spreading pattern in the width.

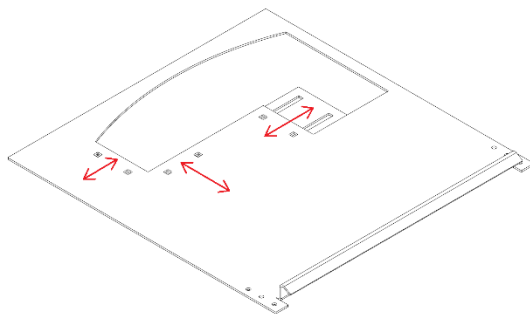
To adjust the dosage, remove the entire slide. To do this, the locking clip must be removed. Then the dosage slide can be taken out. Then loosen the nuts a few turns and move the slider to the desired position. Tighten the nuts again. When the slide is placed back in the machine, it can be secured at a number of different positions, this also influences the outflow opening.



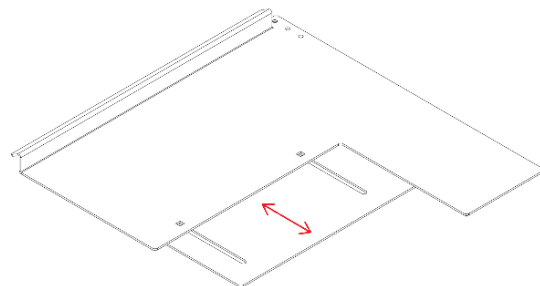
**If the metering slide is not fully inserted into the machine, but a number of positions outwards, pay attention when loading the machine. Make sure that the slide never makes contact with the ground!**



**The adjustment of the metering slide depends on the situation and on the bedding material and can be different depending on the situation.**



*Metering slide BS 900*



*Metering slide BS 1000-3000*

## 8 OPERATING INSTRUCTIONS



**Use the Flingk wide spreader only for the purpose for which the machine is designed and built.**

Before and while operating take the following instructions into account:

- Check prior to commencing work whether the safety decals are clean and can be read at all times, possible wear and tear of the entire wide spreader as well as the hydraulic hoses and presence of the yellow, blue and red dust caps on the connectors.
- Do not start working with an incomplete, damaged or dirty wide spreader!
- Check before every use if the augers and spreading discs can rotate freely and do not collide. This should be checked when the machine is empty and there is not any bedding material in the machine. When one or both augers or spreading discs do not turn freely, the entire machine has to be checked by your dealer.
- The wide spreader may solely be operated from the correct operators position within the cabin of the attached machine.
- In case of stuck bedding material within the wide spreader, place the machine in the tilted, horizontal position on a firm and level surface, turn of the engine of the attached machine and make sure all hoses are depressurized before you attempt to loosen up the material. Be aware for the sharp points and edges of the wide spreader and make use of appropriate tooling to loosen material.
- In case obstruction of the augers or spreading discs occurs, place the machine in the tilted, horizontal position, with the mounting points facing upwards, on a firm and level surface, turn of the engine of the attached machine and make sure all hoses are depressurized before you attempt to clear the movement. Be aware for the sharp points and edges of the wide spreader and make use of appropriate tooling to loosen material.
- Always consult the dealer or Flingk Machinebouw to check the wide spreader after a foreign object has caused the obstruction before starting operation again.
- Wear and use protective clothing and/or equipment while cleaning the wide spreader.

### 8.1 LOADING THE WIDE SPREADER

Loading the wide spreader is done in the tilted, horizontal position, with only the knife touching the ground. For this the bucket must be tilted about 85°-90° forward from the vertical position. Push the bucket into the bedding material with the driving machine and tilt the bucket back to the vertical position.



**The metering slides (chapter 7.4) must be fully inserted during loading! If this is not the case, tan they can get damaged!**



**Make sure nobody stays between the wide spreader and the bedding material while filling the wide spreader.**

### 8.2 RIDING WITH THE WIDE SPREADER

Ensure that while driving the wide spreader is always in the upright position and close to the ground. This prevents possible imbalance and increases the sight depending on the type of connection; in front or behind the wide spreader. However, the machine must be kept 20 cm away from the ground to prevent contact with the ground.



**Make sure as an operator while driving the overview is kept around the wide spreader is kept. Ensure that no one, no people or animals, are around the wide spreader while driving.**



**The wide spreader is solely designed for use on private terrain, do not use or drive with it on the public road. In case you want to transport the wide spreader always adhere to the traffic, safety and environmental regulations and transport the machine in a responsible and safe manner.**

### 8.3 SPREADING



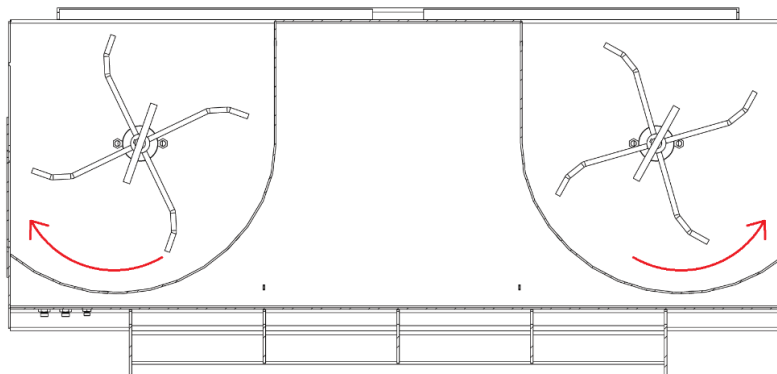
**As an operator always ensure that nobody is within the reach of moving parts, within the operating area, or within close proximity of the machine while working.**



**Make sure that no one, no people or animals, is within the spreading range of the machine during operation! See chapter 1.1.1 for the minimum free space.**

When spreading follow the next instructions:

- Always keep the wide spreader in upright position while discharging the material.
- Ensure that no human being, animals or other materials are within the operating zone before starting to discharge the material.
- Keep the spreader short to the ground during spreading (discs max. 70 cm from the ground). This ensures a better spreading pattern and any stones or other hard, heavy objects will not fly too far away.
- Drive at a constant speed during spreading for the best result.
- The spreading discs must rotate outwards, spread the bedding material forward to the centre as shown in the figure below (applies to BS 1000 to BS 3000. For the BS 900 the disc should rotate in the opposite direction as shown in the figure below, depending on the version of the spreading disc).



**When the wide spreader is operated in the wrong way - if the hydraulic function is being operated incorrectly - the augers will rotate in the wrong direction and the spreading disc(s) will remain stationary.**

## 9 MAINTENANCE



**Maintenance and repair practices may only be performed by skilled specialists and by using proper tooling.**



**Never attempt to work on or repair the wide spreader while it is running! All power sources must be completely disengaged and the wide spreader should be placed in the forward position on a firm, level surface that is large enough to safely accommodate the wide spreader while repairing, cleaning or maintenance.**



**Any work done on the hydraulic system should be done by Flingk Machinebouw or authorized dealers.**



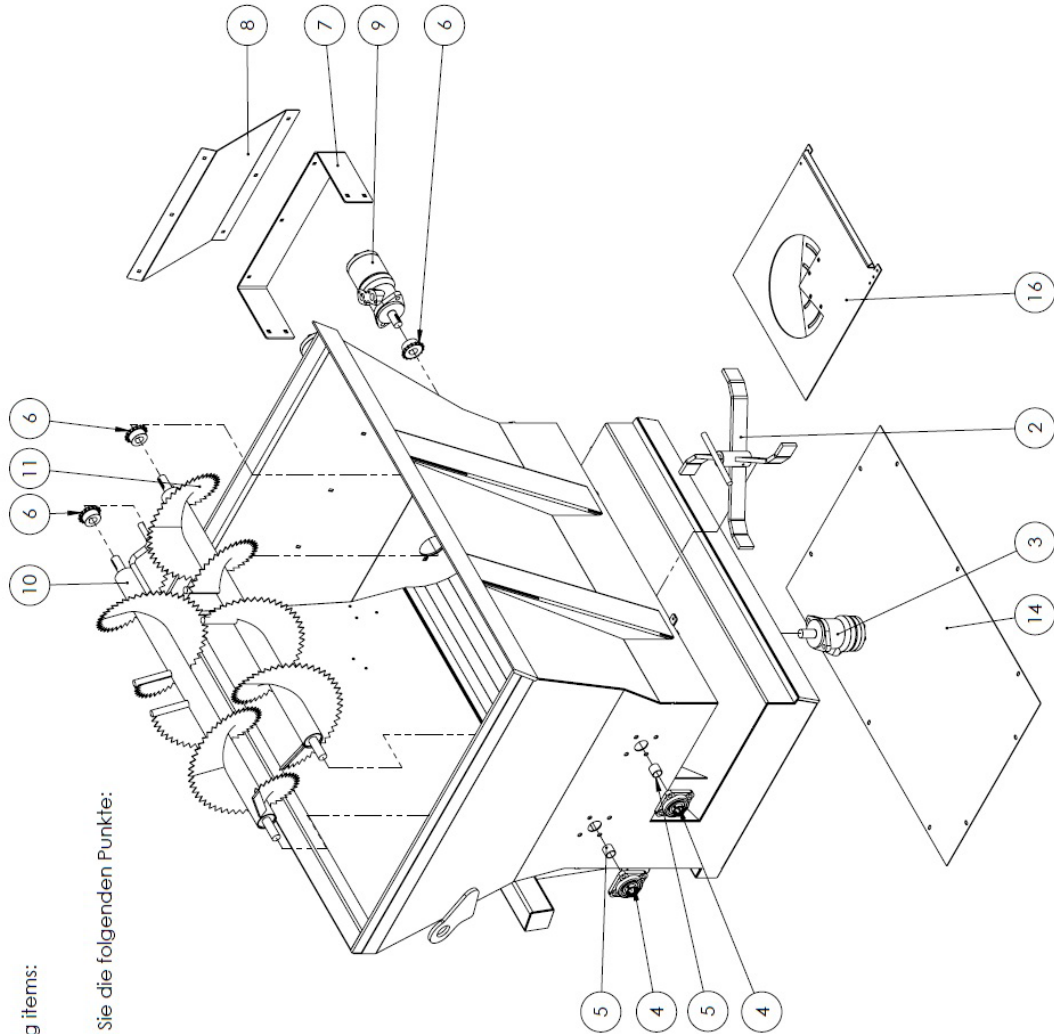
**Make sure the Flingk wide spreader is not subjected to extreme weather conditions and always store the wide spreader in a sheltered area which prevents exposure to persistent rain, snow and ice.**

General maintenance instructions:

- Regularly check the front blade and the fixed arms on the rollers for possible damages, wear or flaws.
- Regularly check the auger for damages and wear. The auger may not collide anything.
- Regularly check the spreading discs (BS 900: 1 piece, BS 1000-3000 2 pieces) for damages or wear. The spreading discs may not collide anything.
- Grease all bearings every 3 months or every 10 hours of use. The bearings are on the outside of the machine on the axles of the augers, on the other side than the hydraulic motors.
- Regularly check the hydraulic system for damages or wear. The casing of the hydraulic hoses must not be damaged under any circumstances.

10 PARTS LISTS

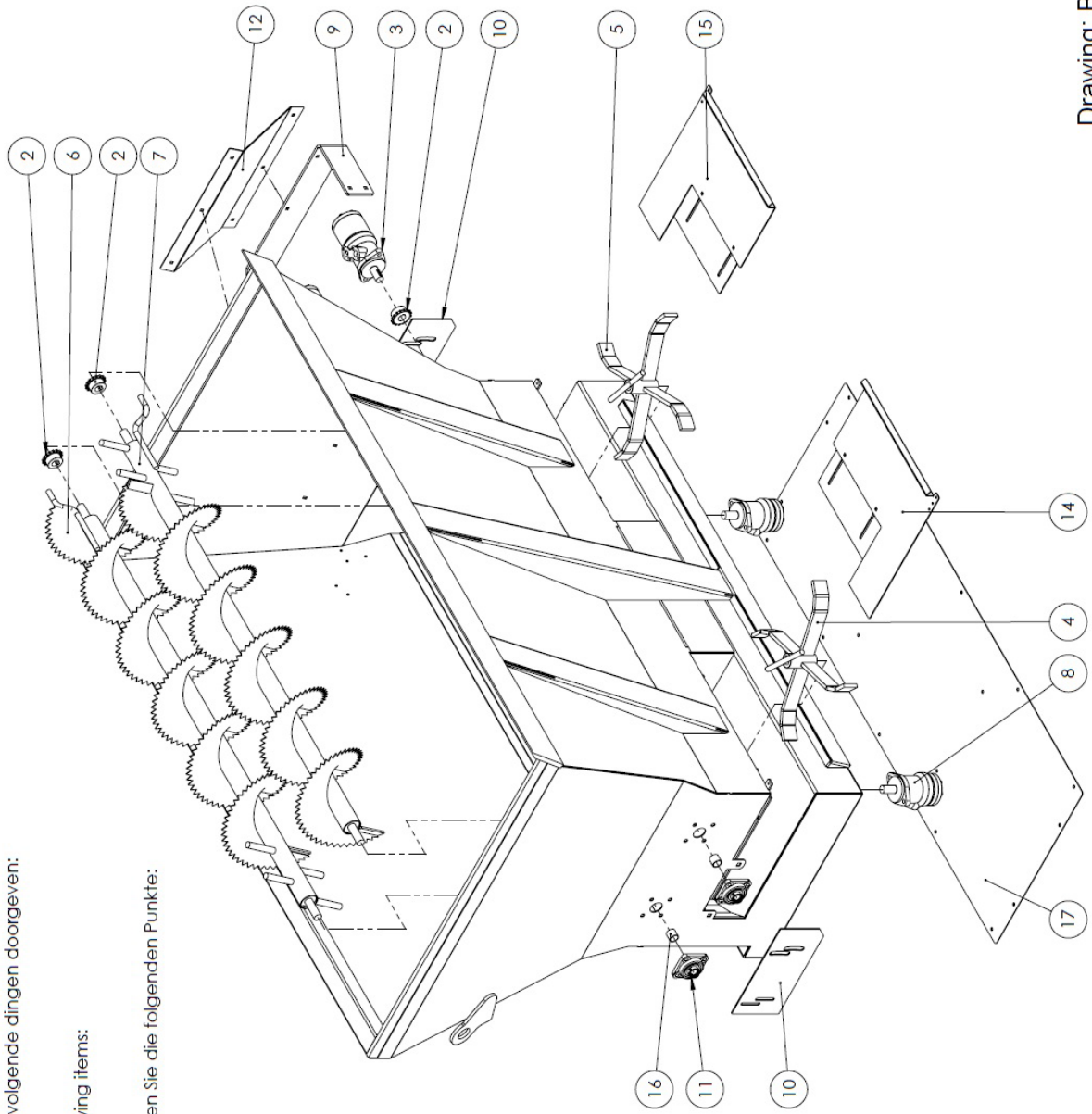
10.1 BS 900



- Bij het bestellen van onderdelen graag de volgende dingen doorgeven:  
Het serienummer van de machine,  
De naam van de tekening.
- Het posiftenummer in de tekening.
- When ordering parts, please give the following items:  
The serial number of the machine,  
The name of the drawing.
- Bei der Bestellung von Ersatzteile, bitte geben sie die folgenden Punkte:  
Seriennummer der Maschine,  
Der Name der Zeichnung,  
Die Positionsnummer in der Zeichnung.

Drawing: BS01

10.2 BS 1000-3000



- Bij het bestellen van onderdelen graag de volgende dingen doorgeven:  
Het serienummer van de machine,  
De naam van de tekening,  
Het positiënummer in de tekening.
- When ordering parts, please give the following items:  
The serial number of the machine,  
The name of the drawing,  
The item number in the drawing.
- Bei der Bestellung von Ersatzteile, bitte geben Sie die folgenden Punkte:  
Seriennummer der Maschine,  
Der Name der Zeichnung,  
Die Positionsnummer in der Zeichnung.

Drawing: BS+01

## 11 WARRANTY CONDITIONS

Unless mentioned otherwise, the guarantee conditions as indicated within the METAALUNIE CONDITIONS, formerly referred to as the SMECOMA CONDITIONS, as published by the Koninklijke Metaalunie will be applied.

The clauses below are taken from this METAALUNIE CONDITION as issued by the Koninklijke Metaalunie in 2019.

### **Article 14: Warranty and other claims**

- 14.1 Unless otherwise agreed in writing, the Contractor guarantees the proper execution of the agreed performance for a period of six months after delivery or completion, as detailed in the following paragraphs.
- 14.2 If the parties have agreed to deviating guarantee conditions, the provisions of this article will remain in full force, unless this is in conflict with those deviating guarantee conditions.
- 14.3 If the agreed performance has not been executed properly, the Contractor will decide within a reasonable period of time whether it will still perform the work properly or credit the Client for a proportionate part of the contract amount.
- 14.4 If the Contractor opts to still execute the performance properly, it will determine the manner and time of execution. The Client must in all cases offer the Contractor the opportunity to do so. If the agreed performance (also) included the processing of material provided by the Client, the Client must supply new material at its own expense and risk.
- 14.5 The Client is responsible for sending parts or materials that are to be repaired or replaced by the Contractor to the Contractor's business location.
- 14.6 The following are for the Client's account:
- a. all transport or shipping costs;
  - b. costs for dismantling and assembly;
  - c. and subsistence expenses and travel time.
- 14.7 The Contractor is only obliged to implement the guarantee if the Client has fulfilled all its obligations.
- 14.7 a. The guarantee does not cover defects that are the result of:
- normal wear and tear;
  - improper use;
  - lack of maintenance or maintenance carried out incorrectly;
  - installation, assembly, modification or repairs carried out by the Client or third parties;
  - faulty or unsuitable goods originating from or prescribed by the Client;
  - faulty or unsuitable materials or tools used by the Client.
- b. No guarantee is given for:
- goods delivered that were not new at the time of delivery;

- inspections and repairs carried out on goods owned by the Client;
- parts that are subject to a manufacturer's guarantee.

14.8 The provisions of paragraphs 3 to 8 of this article apply by analogy to any of the Client's claims based on breach of contract, non-conformity or any other basis whatsoever.





**FLINGK**

Machinebouw

