

# Electrical bedder

## Operator's manual ENG

Read carefully before use



Manufactured by: Flingk Machinebouw B.V.

Flingk Machinebouw B.V.  
Retselseweg 11A  
5473 HC Heeswijk-Dinther  
The Netherlands

Tel.: +31(0)85-0685613  
info@flingk.nl  
www.flingk.com

All rights reserved. No part of this book may be reproduced, stored in a database or retrieval system, or published, in any form or any way, electronically, optically, by print, or any other means, without prior written permission from Flingk Machinebouw B.V.

Version: V5.00

First publication: 23 February 2021

Full translation of the original Dutch version



© 2021 Flingk Machinebouw B.V., Heeswijk-Dinther NL

---

## PREFACE

The Flingk Electrical Bedder is a rugged yet handy machine that lets you spread a thin layer of sawdust, if desired mixed with lime, into the cow's cubicle, quick and efficiently.

This manual has been prepared to enable you to obtain the best results from the Flingk Electrical Bedder under safe working conditions, so please read and observe this operator's manual carefully before you start working and make sure you follow the instructions while working.

Although, the machine has been designed conform the EC certificate or conformity, always use extreme caution when operating the machine. Read all instructions which are written in this operator's manual carefully and make sure you take them into account.

Because Flingk Machinebouw strives towards continuous product improvement, they reserve the right to change design and/or specifications without notice. This does not include an obligation to make changes to machines previously supplied.

If anyone does not fully understand every part of this operator's manual, please obtain further assistance by contacting the dealer from which this product was purchased or by contacting Flingk Machinebouw. Keep this manual available for reference whenever this product is being handled or used. Provide this manual to any new owners and/or operators.

Flingk Machinebouw wishes you a pleasant use!

Supplier details:



## GENERAL SAFETY PRECAUTIONS

This bedder may only be used by those persons which have read and understand the within this operator's manual specified safety and operating instructions. Only completely competent operators which now how to use the controls, the bedder's capabilities, dimensions and all safety requirements may operate the bedder.

Use the bedder only for the purposes for which it was designed! Nobody, no persons, animals or goods shall ride on/in the bedder during transport and/or operation. Do not use the bedder for materials it was not designed for.

The bedder is solely designed for use on private terrain, do not use or drive with it on the public road. In case you want to transport the bedder always adhere to the traffic, safety and environmental regulations and transport the machine in a responsible and safe manner.

Take care that nobody will be within the dangerous zone while operating, transporting or riding with the bedder. As an operator always ensure that nobody is within the reach of moving parts, within the operating area, or within close proximity of the machine while working.

Maintenance and repair practices may only be performed by skilled specialists. Any work done on the electric system should be done by Flingk Machinebouw authorized dealers.

Maintenance, repair practices and cleaning should be performed only with disconnected battery cables.

For storage the battery plug and loading plug must be disconnected at all times.

For long-term storage (more than 7 days) the battery cables must be disconnected at all times.

The bedder should be stored in a dry and frost-free environment, away from combustible materials.

At low temperatures, the capacity of the batteries is reduced and a smooth operation cannot be guaranteed.

Flingk Machinebouw is not responsible for damage to other electronic devices caused by stray currents from the SE 250.

The SE 250 has to be reloaded at all times with the original charger.

Never use the agitator in order to pre-mixing. This can cause an overload.

The battery should be charged when it is under 70%. A fully discharged battery can cause damage to it. We recommend to charge the battery after every use of every day. The charger will stop automatically when the battery is fully charged.



EG-DECLARATION OF CONFORMITY  
according to annex II A of EC Machinery Directive 2006/42/EC

Manufacturer: Flingk Machinebouw B.V.  
Located: Retselseweg 11A  
5473 HC Heeswijk-Dinther  
the Netherlands

hereby declares that the following machinery

**Flingk Electrical Bedder type SE**

with the serial number effective from

**Serial No. 88-19-0150**

fulfils all of the relevant requirements of the EC Machinery Directive 2006/42/EG.

's-Hertogenbosch, 22 June 2013

Flingk Machinebouw B.V.,

Dhr. Ing. N.C.W van den Berselaar

A handwritten signature in blue ink, appearing to be 'N.C.W. van den Berselaar', is written over a faint, circular stamp. The signature is stylized and extends upwards and to the right.

If any significant changes are made to this machine that could affect its safety or compliance with the regulations, its conformity must be reassessed and confirmed before the machine is put back into service.

TABLE OF CONTENT

Preface.....	3
General safety precautions .....	4
1 Safety instructions.....	8
2 Name plate.....	10
3 Product description.....	11
4 Technical specifications.....	11
5 Electrical diagram.....	12
5.1 Besturing met rechthoekige accu-meter en grijze controller .....	12
5.2 Besturing met ronde accu-meter en zwarte controller.....	14
6 Failures.....	15
6.1 Failures machine.....	15
6.2 Failures controller.....	16
6.2.1 Blink code PM-controller (with rectangular battery condition meter).....	16
6.2.2 Blink code PM-controller (with round battery condition meter).....	16
6.3 Blink codes battery charger.....	17
7 Commisioning.....	18
7.1 Stirrer.....	19
8 Operating instructions .....	20
8.1 Controls .....	21
8.2 Loading the bedder .....	23
8.3 Spreading.....	24
8.4 Storage of the bedder .....	24
9 Maintenance .....	25
9.1 Tensioning the conveyor belt.....	26
9.2 Replace conveyor belt .....	27
10 Parts list.....	29
10.1 004-0250-90001 .....	29
10.2 004-0250-90015 .....	30
10.3 004-0250-90004 .....	31
10.4 004-0250-90010 .....	32
10.5 004-0250-90007 .....	33
10.6 004-0250-90011 .....	34

---

10.7	004-0250-90013 .....	35
10.8	004-0250-90017 .....	36
10.9	004-0250-90002 .....	37
10.10	004-0250-90023 .....	38
10.11	004-0250-90021 .....	39
11	Warranty conditions .....	40
12	Notes .....	42

## 1 SAFETY INSTRUCTIONS

Read all safety decals and safety statements in all manuals prior to operating or working with this equipment.



### **DANGER!**

**This symbol by itself or with a warning word throughout this manual is used to call your attention to instructions involving your personal safety or the safety of others. Failure to follow these instructions can result in injury or death.**

The machine has been marked with safety decals without text. For a safe use of the bedder make sure you understand and follow up the instructions on these decals. What is the danger, in which place does the danger occur and, very important, which safety instructions must be taken.

Be careful and be aware of the risks that are associated with the use of the bedder! The meaning of the decals are shown below.

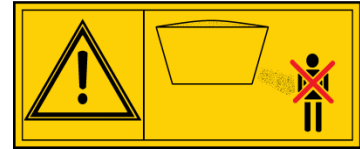
- Carefully read the operator's manual before handling the machine. Observe instructions and safety rules when operating.



- Remove the battery plug and disconnect the battery cables as long as there is worked on the machine.



- Keep a safe distance. Make sure that nobody is within the dangerous zone while operating. As an operator always ensure that nobody is within the reach of moving parts, within the operating area, or within close proximity of the machine while working.



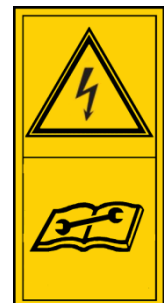
- Use the bedder only for which it was designed! Nobody, no persons, animals or other goods shall ride on/in the bedder or be transported by the bedder in any case.



- Attention moving parts! Stay clear of rotating and moving parts. Maintain a safe distance and make sure nobody is able to come in contact with the moving parts while operating. Never attempt to work on or repair the bedder while it is connected to the power source.

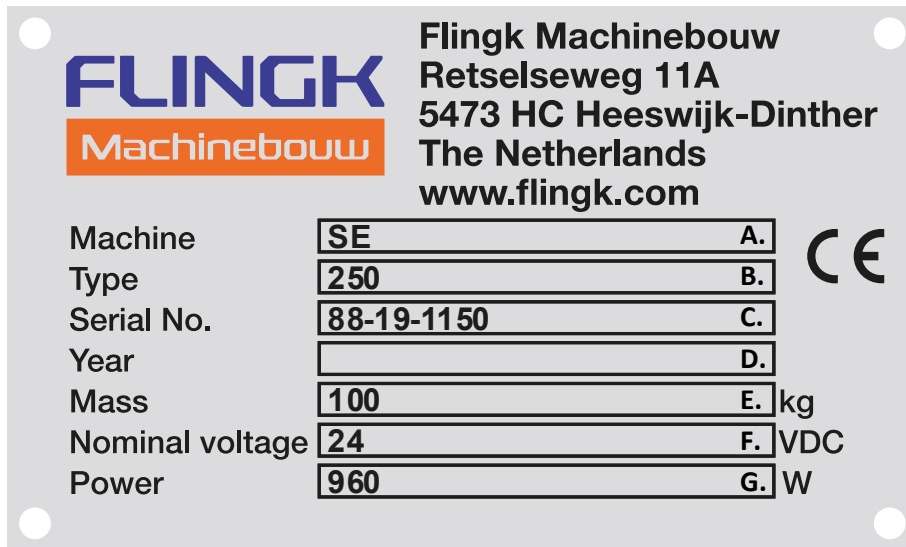


- Attention electricity! The bedder is electric. Make sure that the battery cables are disconnected during maintenance. Always keep in mind that the machine is electrically driven and what the possible hazards are.



2 NAME PLATE

The name plate of the Flingk Electrical Bedder is located on the side of the operating handle at the bottom of the bucket.



- A. Machine : .....
- B. Type : .....
- C. Serial number : .....
- D. Year of build : .....
- E. Weight [kg] : .....
- F. Nominal voltage [V] : .....
- G. Electrical power [W] : .....

### 3 PRODUCT DESCRIPTION

The Flingk Electrical Bedder is a high quality machine that lets you quickly and efficiently spread different types of bedding materials into the cubicles. The SE bedder is electrically powered and is intended to be pushed by hand. The bedder has a volume of 220 litres. By the use of a conveyor belt, there will be discharged on two sides and has the bedder a quiet and uniform infill. An agitator ensures that there occurs no bridge formation. And, optionally, different products are mixed.

### 4 TECHNICAL SPECIFICATIONS

The Flingk SE is suited for different bedding materials. The table below gives a complete overview of the technical specifications as well as the appropriate bedding materials. The bedding materials are abbreviated as follows, Z (sawdust), GS (crushed straw), HS (chopped straw), , C (compost), PM (horse manure), PS (paper shreds), S (sand), M (green bedding), K (lime) and KS (mixture of straw, lime and water with the proportions 1-5-2).

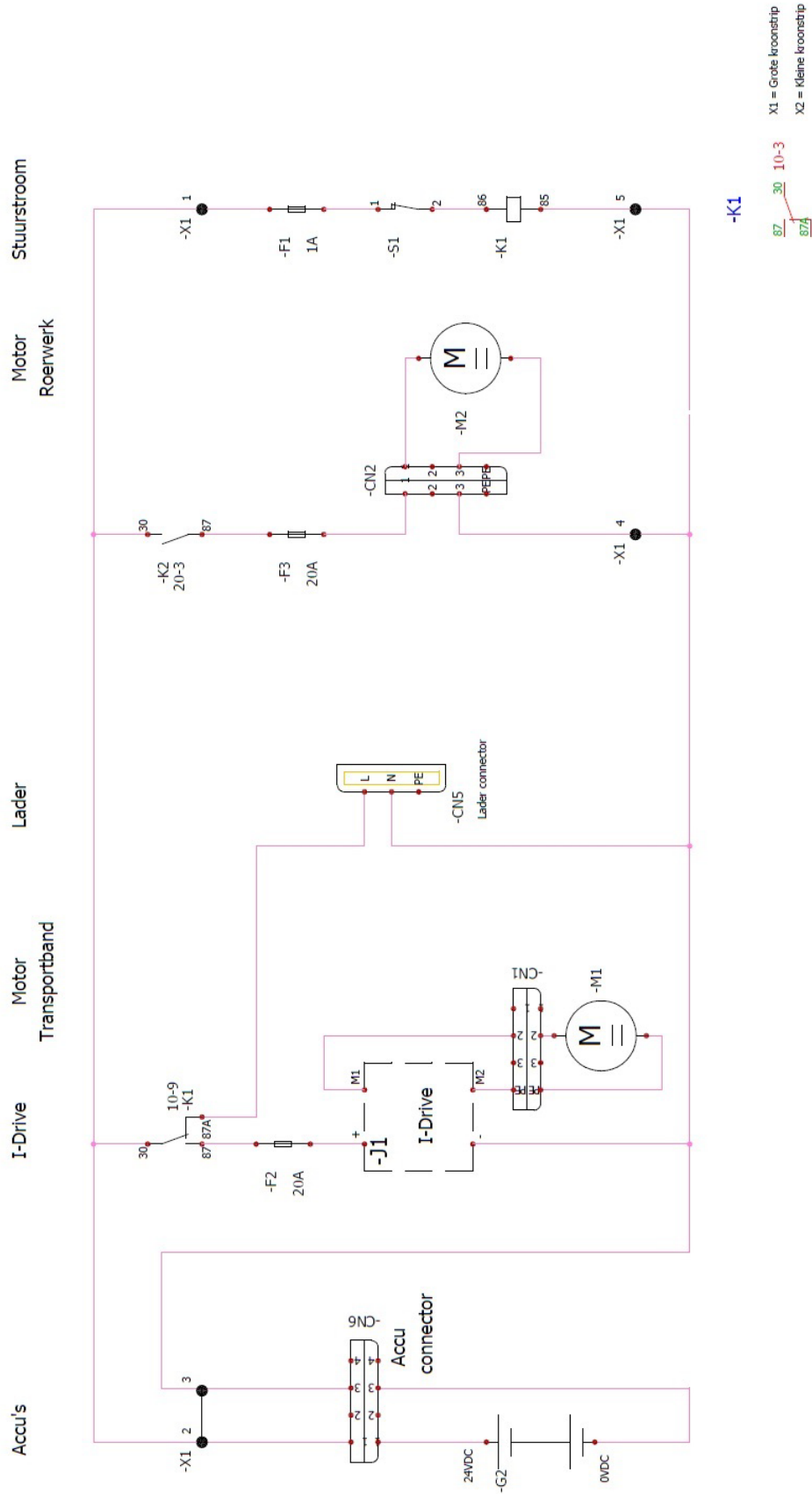
*Technical specifications Flingk Electrical Bedder **Type SE***

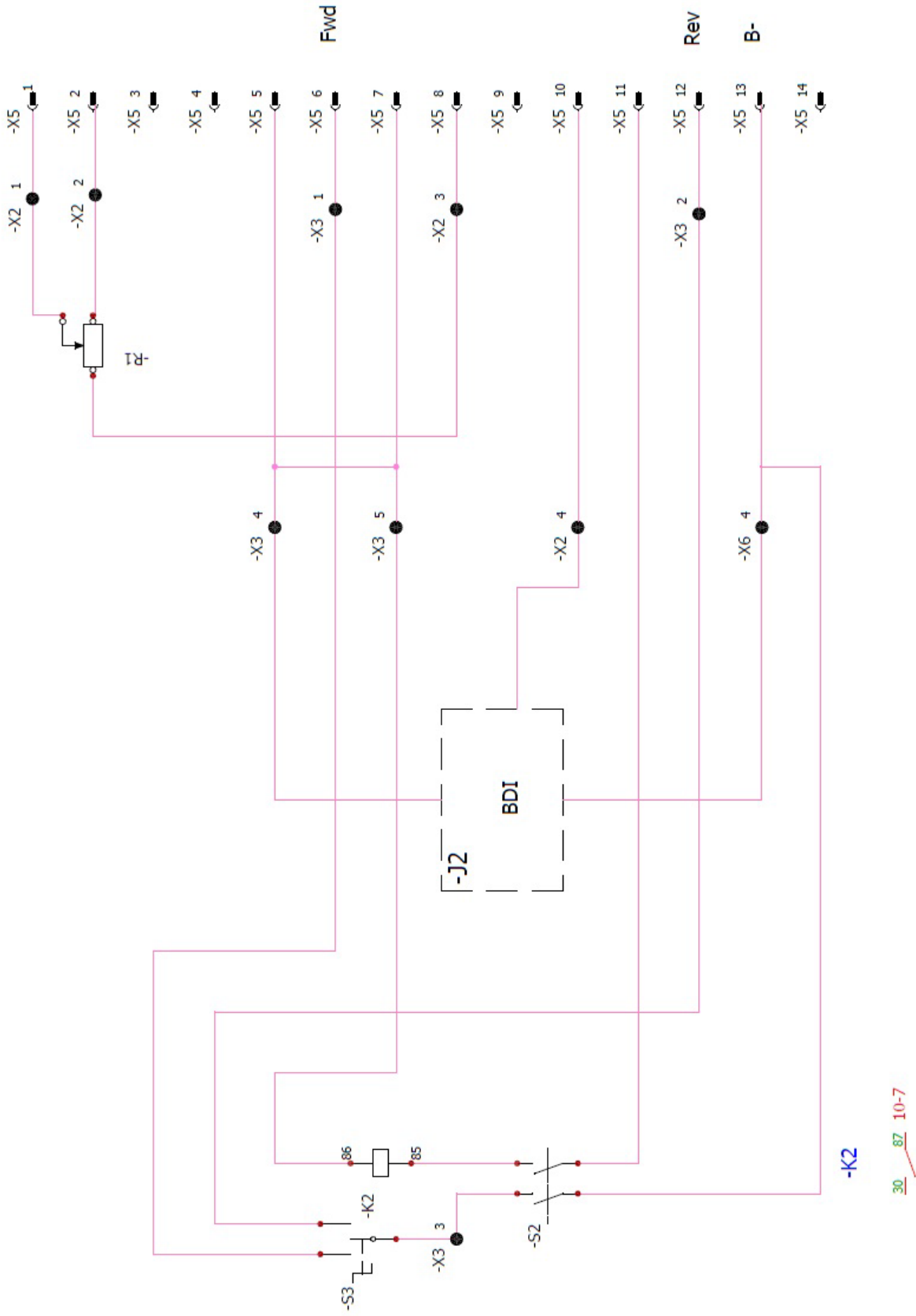
Volume:	SE 250
Bedding material <sup>1</sup>	Z,GS,K
Width (mm)	780
Height (mm)	1250
Content (l)	220
Weight (kg)	100
Max. loading weight	80
Voltage (V-DC)	24
Spreading height (mm)	500

<sup>1</sup> When lime is used, the bucket may not be fully loaded due to the maximum loading weight.

5 ELECTRICAL DIAGRAM

5.1 BESTURING MET RECHTHOEKIGE ACCUMETER EN GRIJZE CONTROLLER







## 6 FAILURES

### 6.1 FAILURES MACHINE

Below some failures that may be possible. A possible solution is given.

If the failure cannot be eliminated with this set of possible solutions, please contact your dealer.

What is the problem?	Possible solution
Controller does nothing.	<ul style="list-style-type: none"> <li>• Check the fuses.</li> <li>• Check the battery condition.</li> <li>• Make sure the blue battery connector is attached to the bottom of the controller.</li> </ul>
Battery condition indicator doesn't blink.	<ul style="list-style-type: none"> <li>• Make sure the main switch is not in the "Charge" position.</li> <li>• Make sure the blue battery connector is attached to the bottom of the controller.</li> <li>• Check the battery condition.</li> </ul>
De conveyor speed cannot be set.	<ul style="list-style-type: none"> <li>• Turn of the controller ("Charge" position) for at least one minute and try again. If the speed still cannot be set, please contact your dealer.</li> </ul>
The stirrer motor is not running.	<ul style="list-style-type: none"> <li>• Check the motor connector is attached to the lowest connection at the bottom of the controller.</li> <li>• Check the right fuse (15A).</li> </ul>
The stirrer motor is running too slow.	<ul style="list-style-type: none"> <li>• Check the battery condition.</li> </ul>
The conveyor belt does not run.	<ul style="list-style-type: none"> <li>• Check the conveyor belt connector is attached to the upper connection at the bottom of the controller.</li> <li>• Check the middle fuse (15A).</li> </ul>
The conveyor belt does run only one direction.	<ul style="list-style-type: none"> <li>• Turn of the controller ("Charge" position) for at least one minute and try again. If the conveyor belt still runs only one direction, please contact your dealer.</li> </ul>
The conveyor belt does not run fast enough.	<ul style="list-style-type: none"> <li>• Check the battery condition.</li> </ul>
The conveyor belt does not accelerate fast enough.	<ul style="list-style-type: none"> <li>• Disconnect the blue battery connector and check by hand if the conveyor belt rotates too heavy. If yes, check if the driving is blocked by anything. Remove the protection cover for this. This is described in chapter 9.</li> <li>• Lubricate the bearings.</li> <li>• Check the battery condition.</li> </ul>
Conveyor belt shakes/rattles.	<ul style="list-style-type: none"> <li>• Disconnect the blue battery connector and check by hand if the conveyor belt tensioners are loose. If not, remove the protection cover of the driving and check if the toothed belt or pulleys are loose. Also check the tension of the toothed belt.</li> <li>• Disconnect the blue battery connector and check if the conveyor belt rollers do not have too much slack.</li> </ul>
Conveyor does not run straight.	<ul style="list-style-type: none"> <li>• Tension the conveyor belt over again as described in chapter 9.1.</li> </ul>
Batteries are not being charged.	<ul style="list-style-type: none"> <li>• Check if the battery charger works properly.</li> <li>• Check the fuse on the charger. Does the charger have a fuse?</li> </ul>

	<ul style="list-style-type: none"> <li>• Check the battery condition. The minimum current for the batteries is 22.8 volts. When the current drops below, the battery may damage.</li> </ul>
--	---

## 6.2 FAILURES CONTROLLER

### 6.2.1 Blink code PM-controller (with rectangular battery condition meter)

The blink code is the number of lights that blink on the battery condition meter.

Blink code	Definition
1	The battery needs charging or there is a bad connection to the battery. Check the connections to the battery. If the connections are good, try charging the battery.
2	There is an open circuit connection to the motor. Check all connections between the motor and the controller.
3	The motor has a short-circuit to one of the battery connections. Contact the service agent.
4	Not used.
5	Not used.
6	The controller is being inhibited from driving.
7	A throttle or direction switch error is indicated. Ensure that the throttle and / or direction switches are in the rest / neutral position before turning on the vehicle.
8	A controller error is indicated. Ensure that all connections are secure and the battery is fully charged.
9	The solenoid brake has a bad connection. Check the solenoid brake and its associated wiring.
10	An excessive battery voltage has been applied to the controller. Check the battery and its associated wiring.

### 6.2.2 Blink code PM-controller (with round battery condition meter)

The blink code is the number of times the indicator flashes on the PM controller. Then there is a short pause after the indicator light flashes again.

Blink code	Definition
1	Forward and reverse input already active in the moment of ignition: the direction of rotation is already chosen.
2	Discharged or under tension battery caused by a short-circuit on the power. It means that the voltage read by the controller is inferior to the minimum provided for the correct working.
3	Not used.
4	Not connected motor or false contact on the circuit. (brushes/armature/cable beakage)
5	Internal fault on the controller or ground on the motor.
6	Fault of the potentiometer. If the negative connection is not present, this fault is been given. This alarm means that the voltage read by the controller is superior to that provided for the speed command.

<b>7</b>	Too high temperature of the circuit: this happens when the temperature of the mosfet is superior to 75°C, which means the machine has been overloaded or there is damage at the motor winding.
<b>8</b>	Motor already working at the start: the operator is trying to turn on the conveyor belt while it is already working.
<b>9</b>	Software fault of the microprocessor or problem on the hardware. It happens in case of damage at the circuits of current and load measure.

### 6.3 BLINK CODES BATTERY CHARGER

The blink codes given below apply to the battery charger type SMC-HF 100 / CHAMP 24-5.

<b>Blink code</b>	<b>Status</b>
Yellow and green not burning	Charger not connected to electricity mains
Only green burning	Charging finished
Only yellow burning	Busy normal charging
Only yellow flashing	Busy levelling charging
Both light burning	No battery connected or battery fuse defective
Only green flashing	Battery voltage too high
Yellow and green flashing simultaneously	Battery voltage too low
Both light flashing alternately	Battery charger too hot

## 7 COMMISIONING



**The bedder may only be used by those which have read and understand the within this operator's manual specified and operating instructions. Only completely competent operators which know how to use the controls, the bedder's capabilities, dimensions and all safety requirements may operate the bedder.**

Make sure the battery is full before each use. This prevents the battery during use becomes empty or that the bedder will not work properly. De battery has the longest life when it is kept charged (more than 70%). Check before each use of:

- The height of the push bar is adapted to the user. The height is adjustable by removing the two locking clips, slide the bar up or down and reinsert the locking clips.
- The push bar is fixed.
- The tires are on pressure (if there are pneumatic tires fitted). The maximum pressure is on the side of the tire. Low pressure tires can cause imbalance. You should also ensure that the tires show no unacceptable damage.
- The charger is disconnected from the battery plug.
- The battery plug is connected to the control box.
- The battery capacity is more than 70%.
- The metering slide is set to the desired amount of bedding material (see chapter 8.1 of this manual for instructions for setting it).
- The conveyor belt is running straight and not slipping. Turn the conveyor several times left and clockwise and check it is not slipping. This way you can also see if the conveyor runs right on the rollers. If this is not, please see later in this manual how to tension the conveyor in the right way.
- The conveyor is not to tensioned too tight. The conveyor should be hanging a little in the middle at the lower end. When in doubt, the conveyor should be tensioned as described later in this manual.
- The conveyor belt is not damaged.
- All warning signs are in place and legible. If they are not, you should replace or clean them.

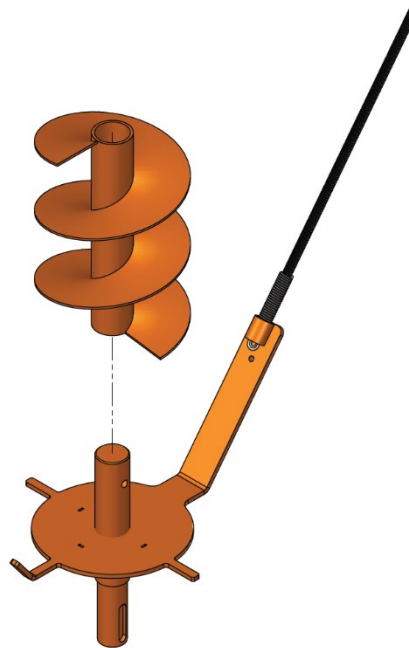
## 7.1 STIRRER

The auger on the stirrer of the SE Electrical Bedder is (dis)mountable. Standard the machine is delivered with the auger not mounted.

With heavy bedding materials such as lime, mounting the auger is not recommended. With lighter bedding materials such as sawdust, it is recommended to mount the auger. The rotating arm must be mounted in each case.



**Using the auger mounted in combination with lime or other heavy bedding materials can cause overload of the motor.**



*Assembly stirrer with auger*

Mount the auger with a M6x45 bolt with lock nut.

## 8 OPERATING INSTRUCTIONS

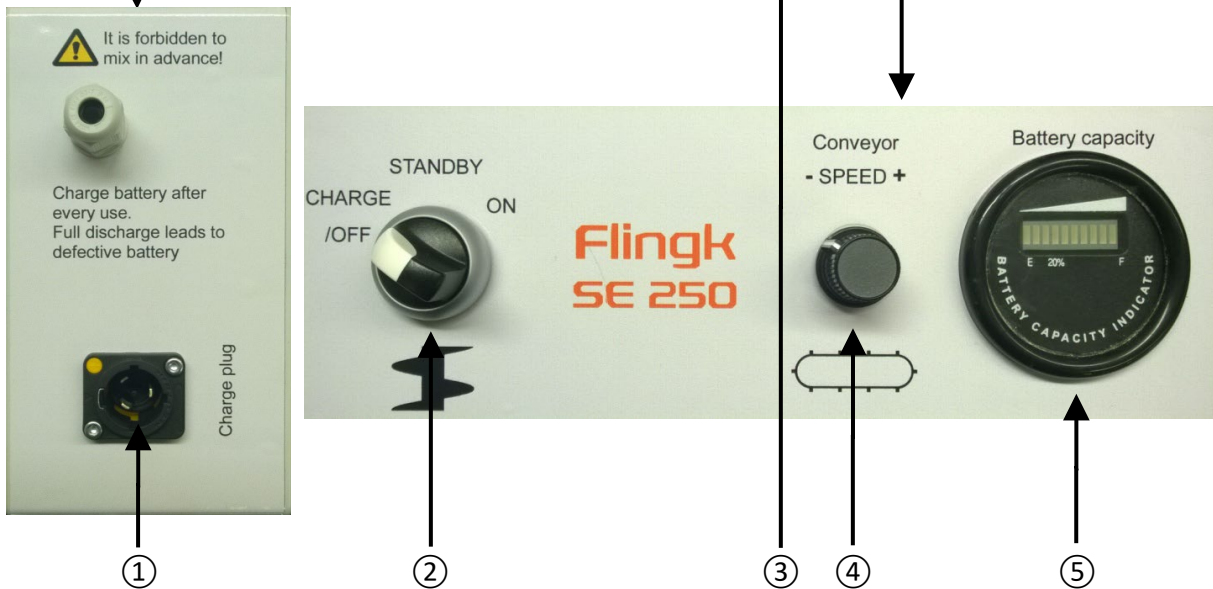


**The Flingk SE bedder is suitable for different bedding materials. Use the bedder solely for the bedding materials as specified in the technical specifications.**

Before using the Flingk SE bedder, take the following rules in account:

- The battery should be charged more than 70%. A fully discharged battery can cause damage to it. We recommend to charge the battery after every use of every day. The charger will stop automatically when the battery is fully charged. For charging, first place the charge plug in the machine, then the plug to the wall socket.
- Ensure that all safety and warning signs are in place and legible. If they are not, you should replace or clean them.
- Always check the entire electrical installation for possible damage and defects. No cables or components may be stripped from their insulation.
- The bedder may only be operated with both hands on the handles.
- Charge the bucket never above the edge, this can overload the machine or make it top-heavy. Never load more than 70 kilograms or lime in the bucket.
- Adjust in any circumstances the stirrer different than in original state. The engine is tested with the original stirrer. When the stirrer is adjusted, the motor can be overloaded.
- When in the bucket unexpectedly occurs bridging, turn off the engine immediately. Place the bedder on a firm, stable surface. Disconnect the battery plug before attempting to loosen the bedding material.
- After jamming the machine caused by an external object, the entire machine should be checked by your dealer before further use.
- Make sure the conveyor switch is in neutral mode before the main switch is turned on. This prevents the conveyor belt to start to rotate undesirably.

8.1 CONTROLS



① **Battery plug**

With this connection you can connect the battery charger to the machine. De plug of the supplied battery charger fits to this connection. You can charge the machine to twist the main switch ② to “Charge/off”.



**Ensure that the plug is locked properly. To disconnect the plug, the lock should be pulled back before twisting the plug.**

## ② Main switch

With this three-position switch you can switch the control system in 3 modes;

- **Charge/Off** The connection between de control system and the batteries is disconnected. The machine is turned off. In this mode can the machine be charged.
- **Standby** De control system is connected to the batteries. The battery status will be shown on the battery condition indicator.
- **On** The stirrer is rotating. De direction of this is not reversible. After a short delay the conveyor belt can be activated in the desired direction.



**Make sure the conveyor switch is set to the neutral position when the main switch is turned on to ensure that the conveyor does not start tot rotate undesirably.**

## ③ Conveyor belt

This button switches the conveyor. The icons indicate the direction in which the conveyor belt is running. If you slide to the left, the conveyor spreads to the left side of the machine. If you slide the switch to the right, the conveyor spreads to the right side. In the middle position of the switch, the conveyor belt is turned off. The conveyor belt can be turned on after a few seconds after the main switch is turned on.

## ④ Conveyor belt speed

Using this rotary control continuously adjusts the speed of the conveyor. Running the conveyor faster or slower will spread more far or less far.



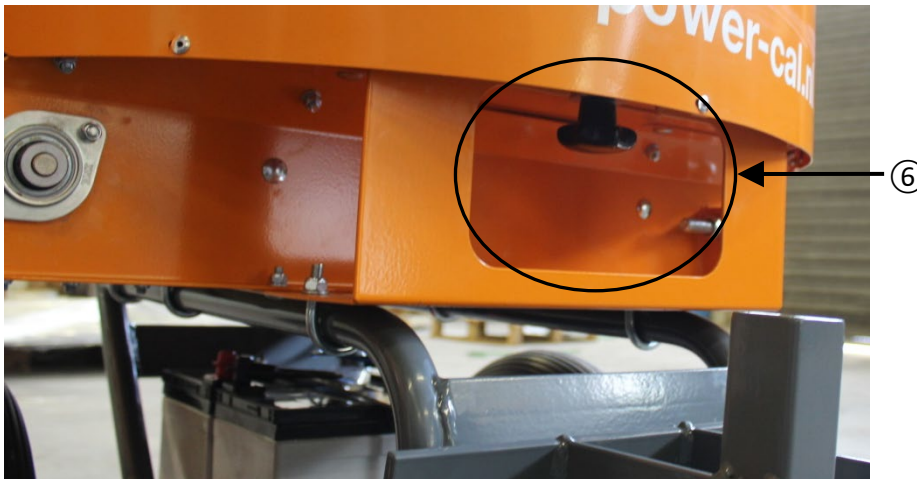
**When you turn the control when the conveyor is running, the speed will be adjusted immediately.**

## ⑤ Battery condition indicator

The battery meter shows you the battery condition. This is in the modes "Standby" and "On". When the battery capacity is below 20%, the battery meter switches off the machine automatically. The battery should be charged when it is under 70%. A fully discharged battery can cause damage to it. We recommend to charge the battery after every use of every day. The charger will stop automatically when the battery is fully charged.

## ⑥ Metering slide

This slider allows you to set the gap to the conveyor. If the slider slides inwards, the opening will be reduced. Turn the knob always fixed so that the slide does not change position and the setting is retained.



## 8.2 LOADING THE BEDDER

Before loading the bedder, make sure you have checked the list below.

- Make sure that all functions work before filling the bedder.
- Make sure the bedder is on a stable surface.
- Ensure that all wheels are inflated properly (in case here are pneumatic tires fitted). The wheels must also be free from damage.
- Make sure the push bar is set at the right height and the handles are fixed.
- Ensure that the metering slide is set to the desired amount of bedding material (see page 20 of this manual for instructions for setting it).

Load the bedder as follows:

- Load the bedder gradually and not over the edge of the bucket.
- Ensure that there is no weight leaning on the edge of the bedder during loading, the bedder can become unbalanced and fall over.



**Never lean weight on the edge of the bedder while loading!**



**Never use the stirrer in order to pre-mixing! This can cause overload. The stirrer is engineered to mix while spreading.**

### 8.3 SPREADING



**Avoid dangerous situations, keep a safe distance from moving parts and make as an operator sure that you always keep an overview about what is inside the working area of the machine.**



**Make sure there are no persons or animals within the working area of the machine! Walk forward with the bedder.**



**Stay away from moving parts! Keep your limbs well outside the range of the stirrer if activated.**



**If any bridging occurs, never take your limbs or other devices into the bucket when the stirrer is activated! Turn off the machine if any bridging occurs. When the machine is turned off and the battery plug is disconnected, the bridging can be solved.**

At bedding, proceed as follows:

- Make sure before spreading that there are no persons or animals within the working area of the machine.
- Switch the main switch to “On”. The stirrer will start to rotate.
- If necessary, adjust the speed of the conveyor belt.
- Start spreading on the desired side while riding quietly along the cubicles to distribute the bedding material.



**If there is no bedding material distributed to the conveyor belt because there is caked bedding material in the bucket, immediately turn off the machine. Overloading the stirrer can lead to damage to the machine.**

### 8.4 STORAGE OF THE BEDDER



**Store the bedder out of reach of children and animals!**

- Settle the spreader on a flat and stable surface.
- Store the spreader dry and frost free.
- Do not store the spreader with a loaded bucket, it can get stuck and the machine can be overloaded the next time you will use it.
- Make sure the spreader is not stored near combustible materials.
- If the spreader is stored for longer than 7 days, the battery pole clamps should be disconnected.

9 MAINTENANCE



**Maintenance and repair may only be performed by sufficient technically skilled staff and carried out with the right tools.**



**Maintenance, repairs and cleaning should only be performed with disconnected battery poles and when the bedder is settled stable.**



**Repairs to the electrical system should only be done by the dealer or Flingk Machinebouw.**



**Ensure the spreader will not be exposed to extreme weather conditions and store the machine in a shielded environment that is protected from rain, snow and ice.**



**Clean the machine only with gently running water and a soft brush or cloth. Do not use a high pressure cleaner, water can penetrate the electrical installation.**

Maintenance should be done as follows:

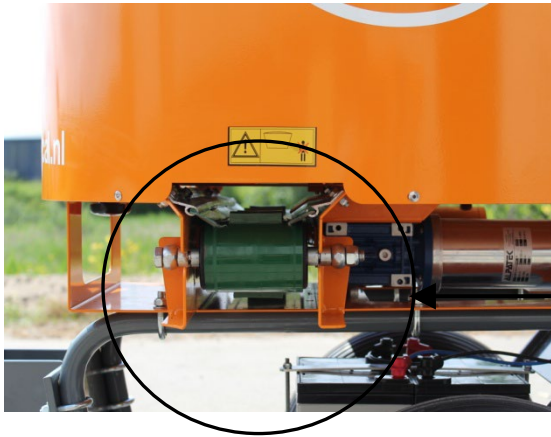
- Check the tires for damage and pressure.
- Charge the battery after every use.
- Check the cables and components of the electrical system for damage.
- Check the tension of the conveyor. Tensioning the conveyor has to be done as described later in this manual.
- Lubricate the bearings of the conveyor every week. Use penetrating lubricant spray.
- Clean the conveyor weekly. Caked bedding material residues depositing along and under the belt it creates extra resistance.
- Clean the toothed belt drive every month. To do this, the cover need to be removed by unscrewing the two locknuts a few drives (see picture).



## 9.1 TENSIONING THE CONVEYOR BELT



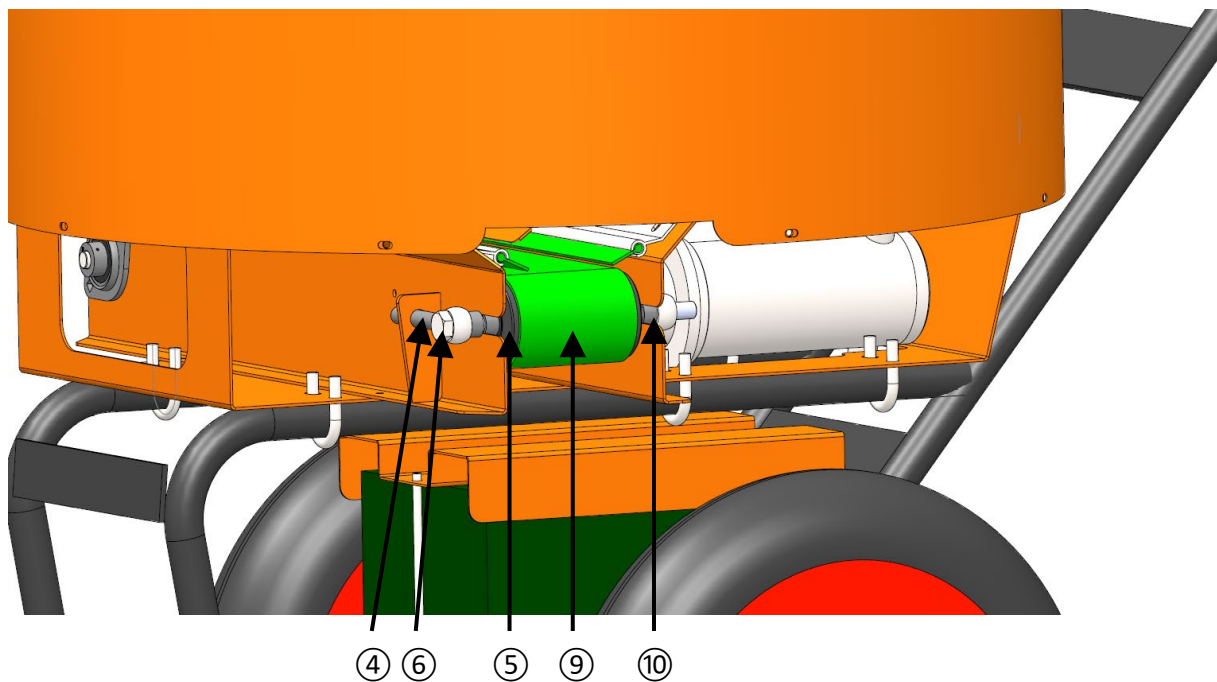
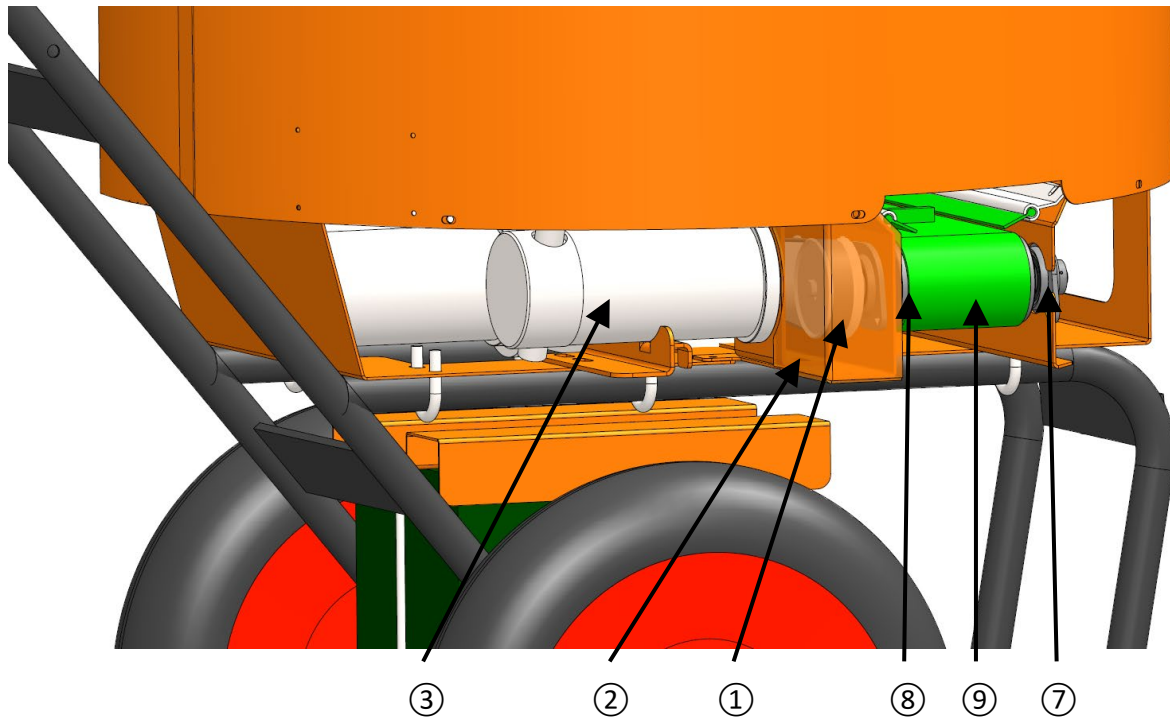
**Tensioning the conveyor belt only with the non-driven roller!**



This side is the non-driven roller.

- Place the spreader on a flat, solid surface.
- Disconnect the battery plug.
- Unscrew both adjusting bolts of the non-driven roller so that the belt is a little stretched but not tensioned.
- Sign exactly 500mm on the conveyor and tighten both adjusting bolts so that the belt will be stretched to 501,5mm.
- Ensure that both sides of the roller are tensioned the same distance so after tensioning the belt its will roll straight.
- Always test the conveyor to diagonal rolling before taking the machine back into use,
- If the conveyor is diagonal rolling, loosen the adjusting screw on the side which the conveyor is running to, until the conveyor rolls straight.
- If the belt is tensioned and rolls straight, lock the adjusting bolt with the lock nuts.

## 9.2 REPLACE CONVEYOR BELT



To remove the conveyor belt proceed as follows:

- Make sure the SE has enough stability!
- Remove the cover ① of the toothed belt drive.
- Distension the toothed belt ② by loosening the screws of the motor mount a few turns so the motor mount can move ③.
- Remove the toothed belt ②.
- Distension the adjusting screws ④ at the side of the driven roller. This is done by loosening the lock nut and the tensioning nut as far back as possible.

- Remove the axis of the driven roller ⑤, this is a bolt ⑥ M12x190.
- Raise down the driven roller and remove it.
- Unscrew the bearings ⑦ at the side of the driving roller and remove the bearing which is not at the side of the motor.
- Remove the driving roller ⑧.
- Remove the conveyor belt ⑨.



**If the M12x190 bolt is screwed too tight, and the driven roller does not roll easy, the motor could get overloaded!**

To mount the conveyor belt proceed as follows:

- Place the conveyor belt ⑨, make sure the carriers are at the outside of the conveyor belt and the upper side rests on the guides.
- Place the driving roller ⑧ and mount the bearings ⑦. Make sure the driving roller is centred between the sides. Screw the bearings, and then the locking screws of the bearings.
- Place the driven roller ⑤, this is done by raising down the conveyor belt.
- Mount the axis of the driven roller ⑥, this is a bolt M12x190. The right order is: Adjusting screw - distance bus - distance bus - driven roller - distance bus - distance bus - adjusting screw - lock nut.
- Make sure all 4 the distance buses ⑩ are placed!
- Don't screw the bolt M12x190 too tight, the roller has to roll easy.



**If the M12x190 bolt is screwed too tight, and the driven roller does not roll easy, the motor could get overloaded!**

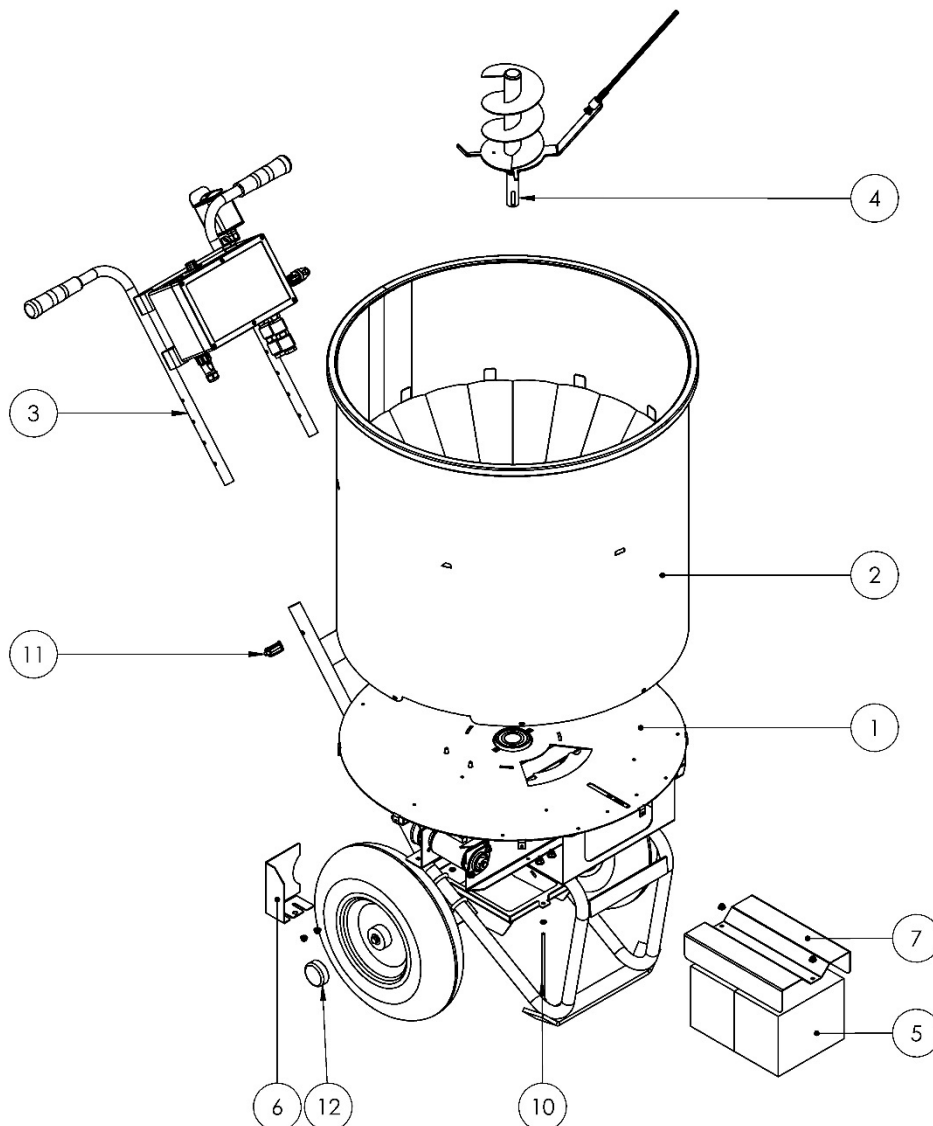
- The conveyor has to be tightened at the last step!
- Place the toothed belt ② around the toothed rollers of the motor and the driving roller. Make sure the toothed pulleys are in line!
- Mount the cover ① of the toothed belt,
- Tension the conveyor belt as described in chapter 9.1 of this user's manual.

10 PARTS LIST

In the following chapters are the item numbers of the various components of the SE 250. These parts can be ordered at your dealer or Flingk Machinebouw.

10.1 004-0250-90001

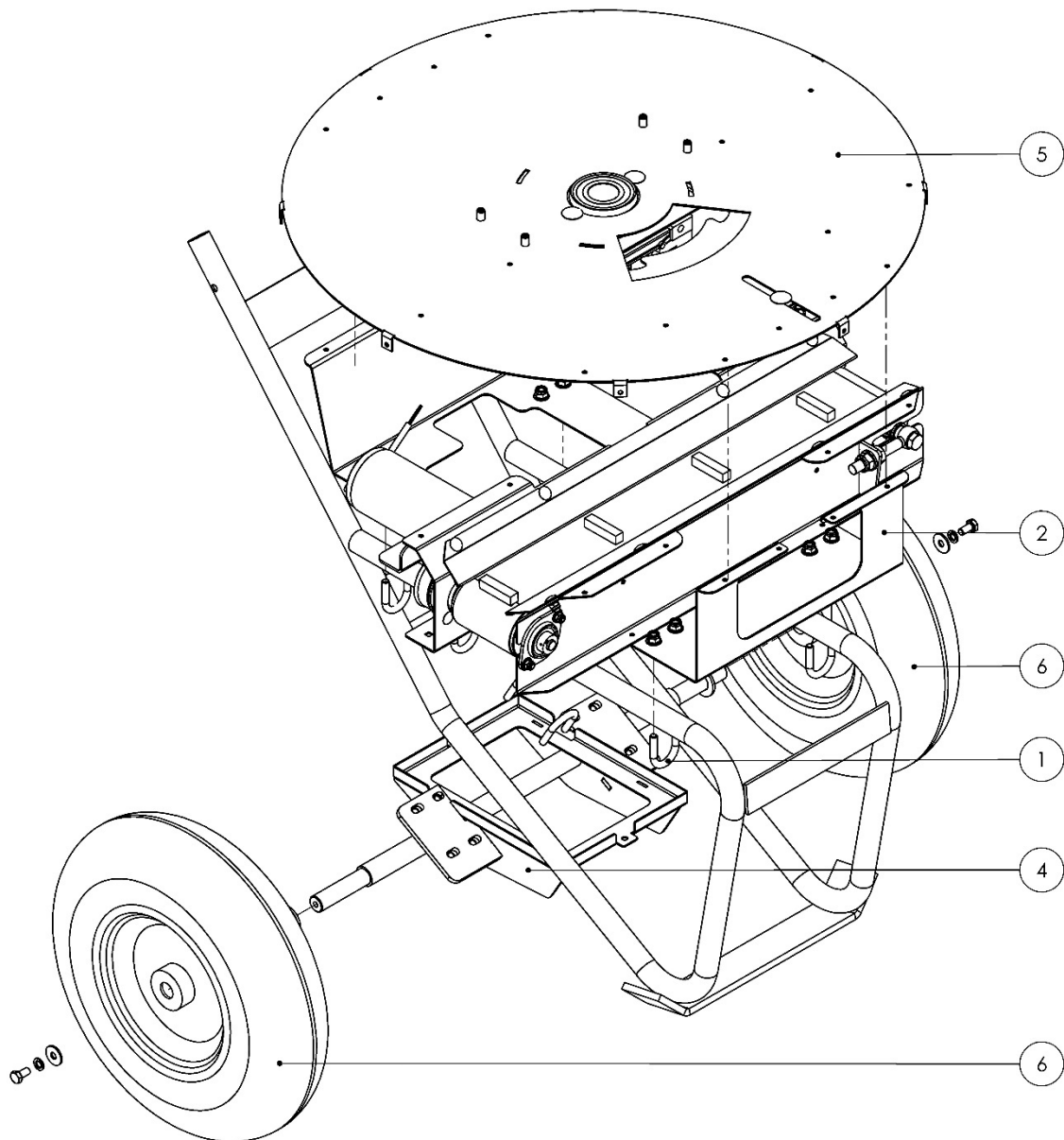
SE 250			
Position	Part No. (from serial number 88-19-0467)	Part No. (up to serial number 88-19-0466)	Number
1	004-0250-90015-02	004-0250-90015-01	1
2	004-0250-50011-02	004-0250-50011-01	1
3	004-0250-90010-02	004-0250-90010-01	1
4	004-0250-90007-03	004-0250-90007-01	1
5	004-0250-00185-02	004-0250-00185-02	2
6	004-0250-00063-02	004-0250-00063-01	1
7	004-0250-00199-02	004-0250-00199-01	1
10	DIN931 M6x170	DIN931 M6x170	2
11	905-0103-00013-01	905-0103-00013-01	2
12	908-1204-00003-01	908-1204-00003-01	2



10.2 004-0250-90015

*Frame SE 250 with electro section and conveyor belt section*

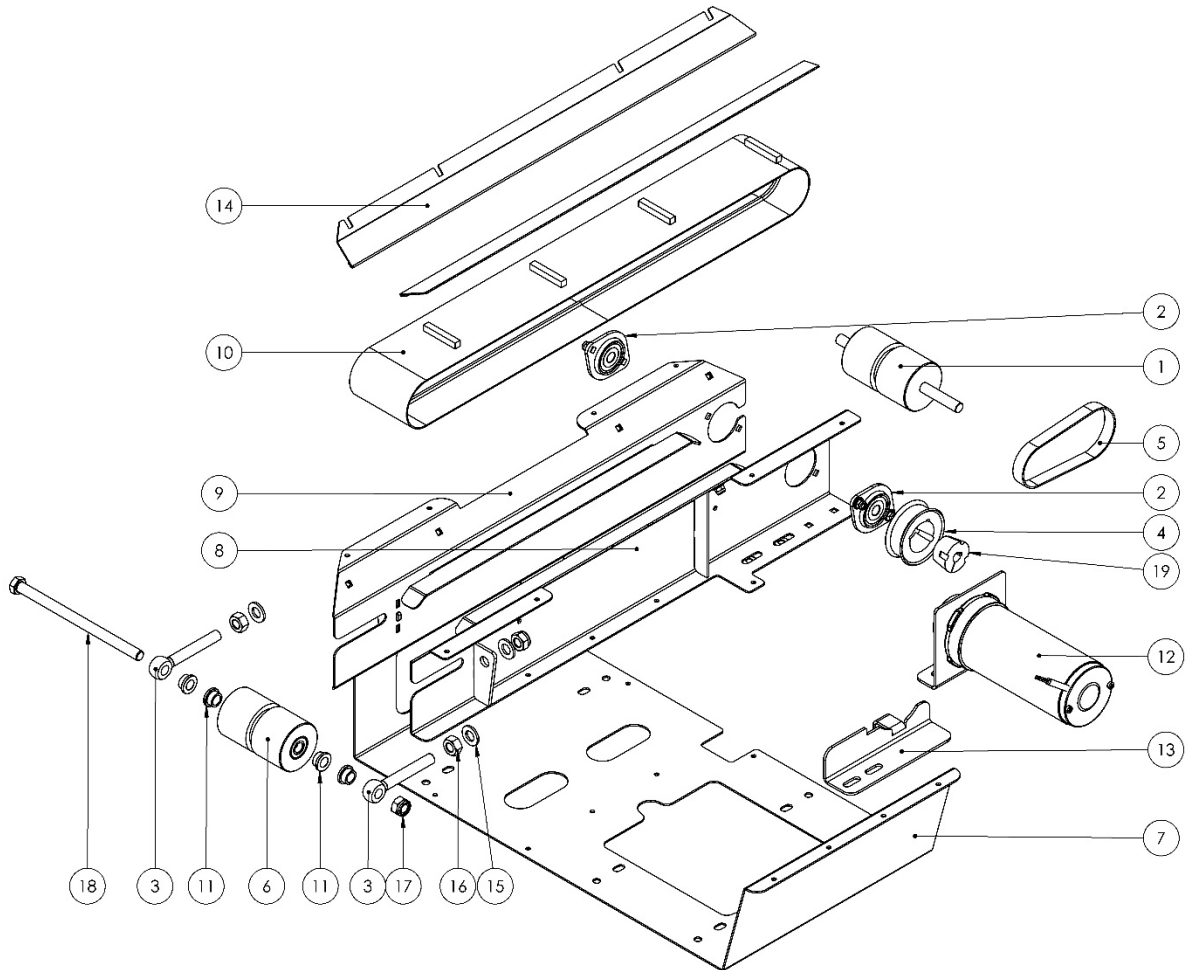
Position	Part No. (from serial number 88-19-0467)	Part No. (up to serial number 88-19-0466)	Number
1	908-0501-00003-01	908-0501-00003-01	10
2	004-0250-90004-02	004-0250-90004-01	1
3	004-0250-50023-02	004-0250-50023-01	1
4	004-0250-50025-03	004-0250-50025-02	1
5	004-0250-90017-02	004-0250-90017-01	1
6	905-0403-00007-01 905-0403-00009-01 * * option big wheels	905-0403-00007-01 905-0403-00009-01 * * option big wheels	2



10.3 004-0250-90004

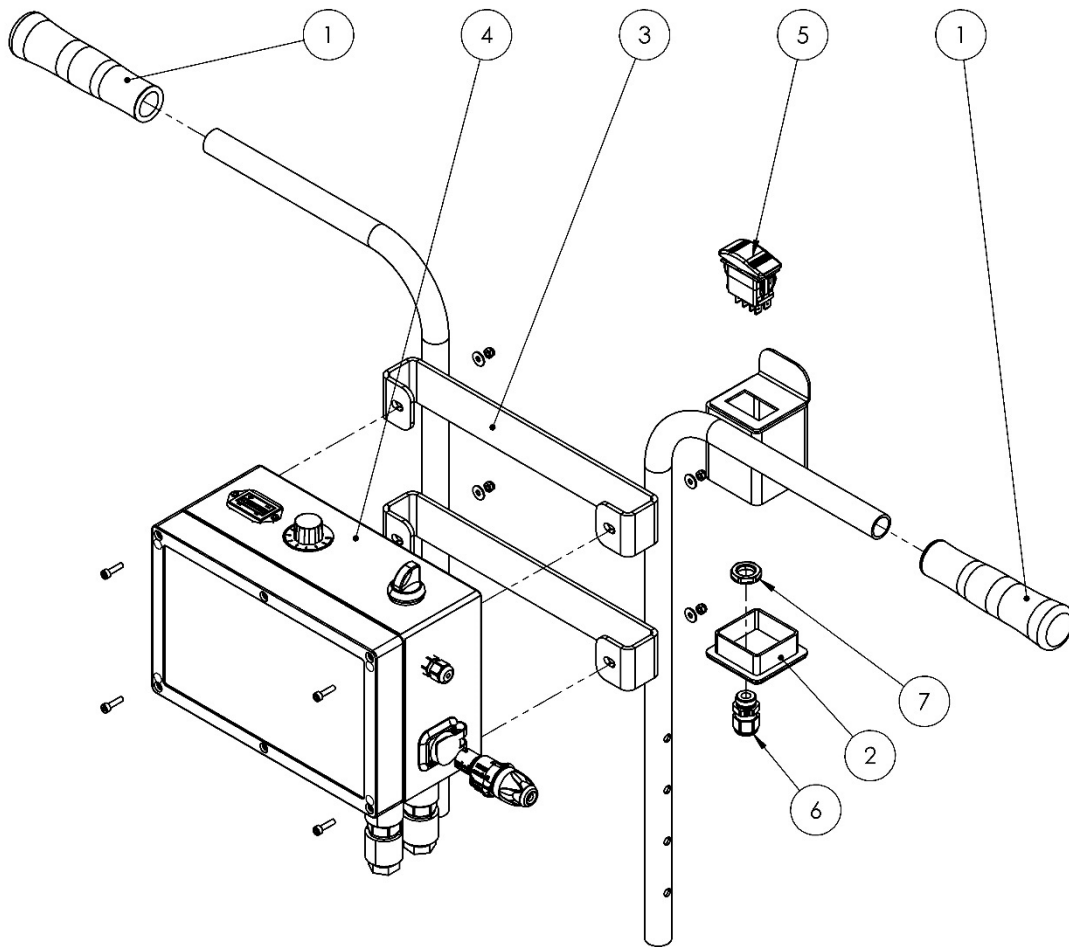
*Conveyor belt section complete*

Position	Part No. (from serial number 88-19-0467)	Part No. (up to serial number 88-19-0466)	Number
1	004-0250-90008-01	004-0250-90008-01	1
2	901-0202-00003	901-0202-00003	2
3	908-0103-00001	908-0103-00001	2
4	004-0250-00171-01	004-0250-00171-01	1
5	004-0250-00175-01	004-0250-00175-01	1
6	004-0250-90003-01	004-0250-90003-01	1
7	004-0250-00027-03	004-0250-00027-02	1
8	004-0250-90005-02	004-0250-90005-01	1
9	004-0250-90006-02	004-0250-90006-01	1
10	914-0100-00013-01	914-0100-00013-01	1
11	901-0204-00001	004-0250-00033-01	4
12	004-0250-90013-02	004-0250-90013-01	1
13	004-0250-00159-02	004-0250-00159-01	1
14	004-0250-00341-04	004-0250-00341-01	2
15	DIN125A M12	DIN125A M12	7
16	DIN934 M12	DIN934 M12	2
17	DIN985 M12	DIN985 M12	3
18	DIN931 M12x190	DIN931 M12x190	1



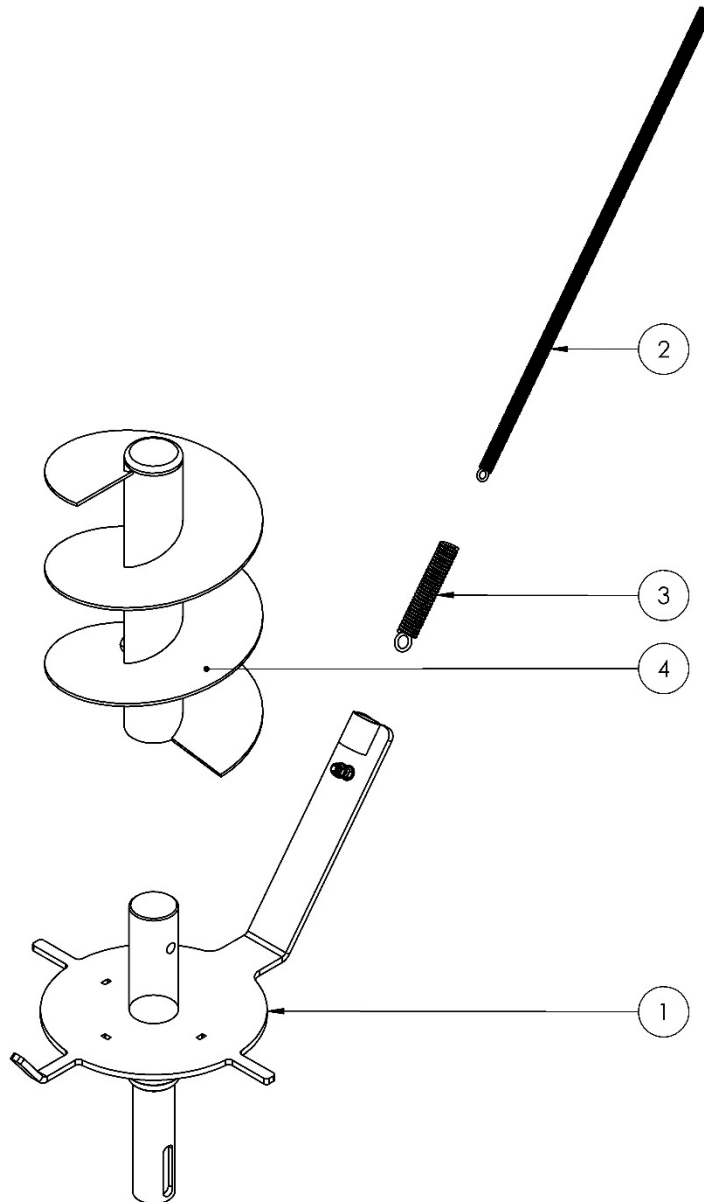
10.4 004-0250-90010

<i>Handlebar SE 250 complete</i>			
Position	Part No. (from serial number 88-19-0467)	Part No. (up to serial number 88-19-0466)	Number
1	905-0501-00001	905-0501-00001	2
2	004-0250-00221-01	004-0250-00221-01	1
3	004-0250-50003-02	004-0250-50003-01	1
4	004-0250-90023-03	004-0250-90023-02	1
5	907-0101-00001-01	907-0101-00001-01	1
6	907-0106-00003	907-0106-00003	1
7	907-0106-00015	907-0106-00015	1



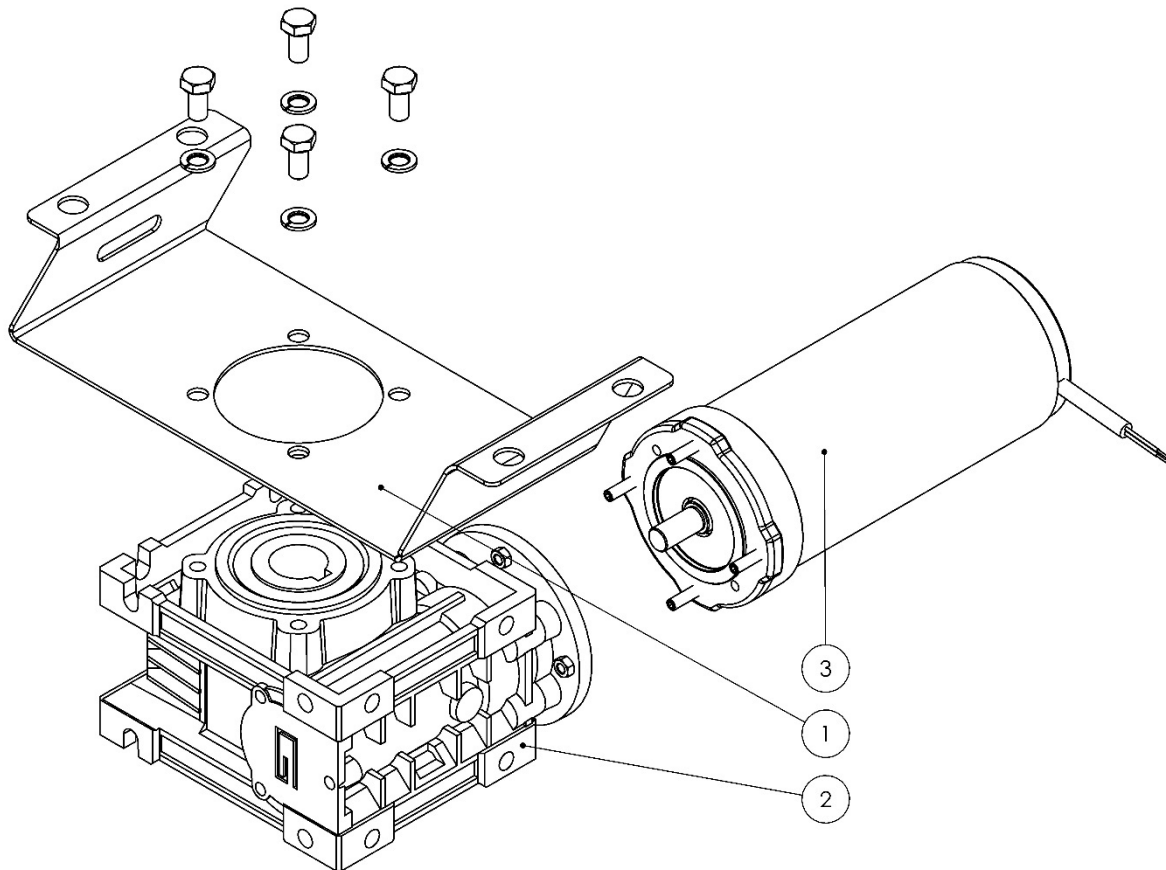
10.5 004-0250-90007

<i>Stirrer SE 250</i>			
Position	Part No. (from serial number 88-19-0467)	Part No. (up to serial number 88-19-0466)	Number
1	004-0250-50027-04	004-0250-50027-02	1
2	908-1101-00007-01	908-1101-00007-01	1
3	908-1101-00005-01	908-1101-00005-01	1
4	004-0250-90057-01	004-0250-90057-01	1



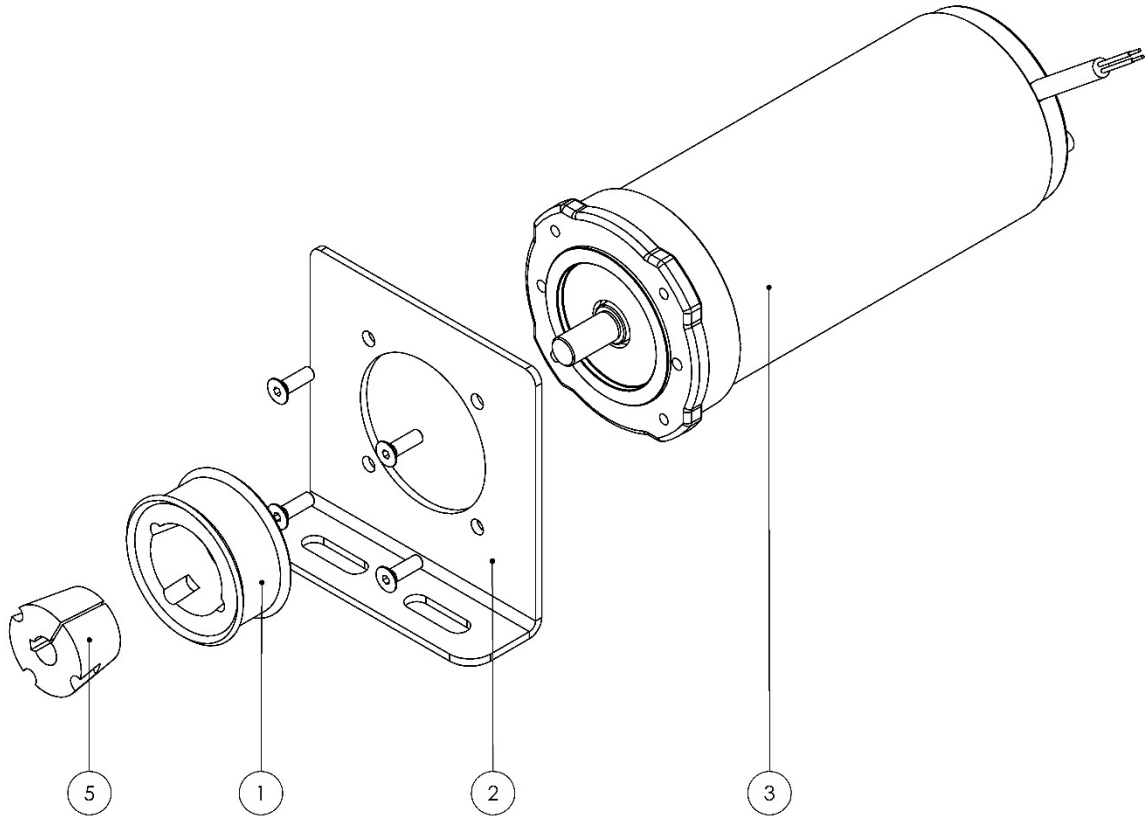
10.6 004-0250-90011

<i>Stirrer motor with mount</i>			
Position	Part No. (from serial number 88-19-0467)	Part No. (up to serial number 88-19-0466)	Number
1	004-0250-00087-05	004-0250-00087-03	1
2	901-0602-00003-01	901-0602-00003-01	1
3	907-0701-00001-01	004-0250-00325-01	1



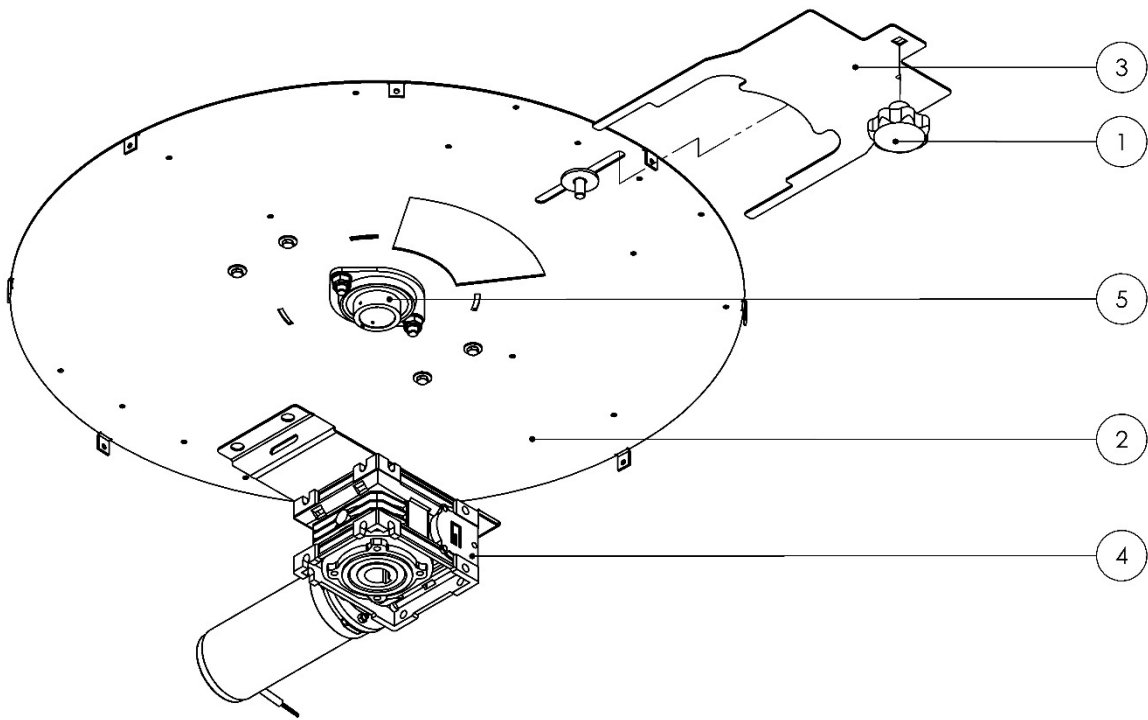
10.7 004-0250-90013

<i>Conveyor belt motor with mount</i>			
Position	Part No. (from serial number 88-19-0467)	Part No. (up to serial number 88-19-0466)	Number
1	004-0250-00169-01	004-0250-00169-01	1
2	004-0250-00037-03	004-0250-00037-02	1
3	907-0701-00003-01	004-0250-00327-01	1
5	901-0301-00005	901-0301-00005	1



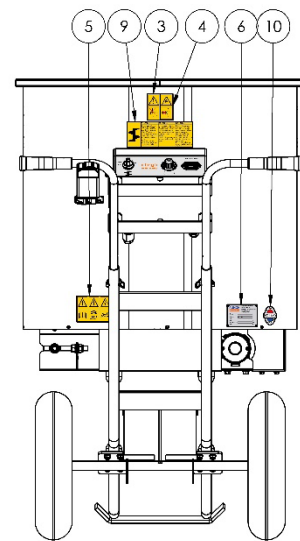
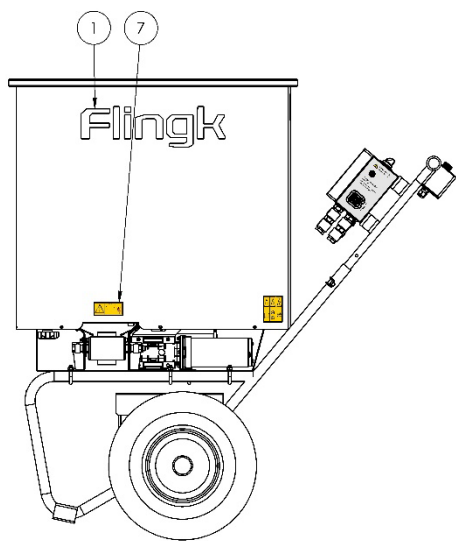
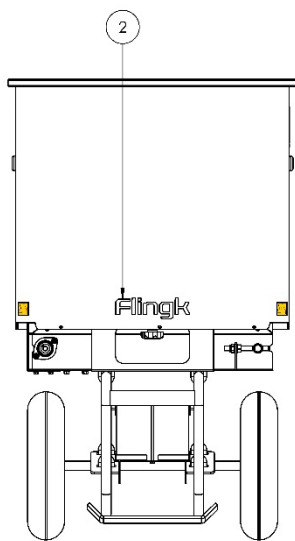
10.8 004-0250-90017

<i>Baseplate bucket</i>			
Position	Part No. (from serial number 88-19-0467)	Part No. (up to serial number 88-19-0466)	Number
1	908-0205-00003-01	908-0205-00003-01	1
2	004-0250-00019-04	004-0250-00019-02	1
3	004-0250-00021-02	004-0250-00021-01	1
4	004-0250-90011-02	004-0250-90011-01	1
5	901-0202-00005-01	901-0202-00013-01	1



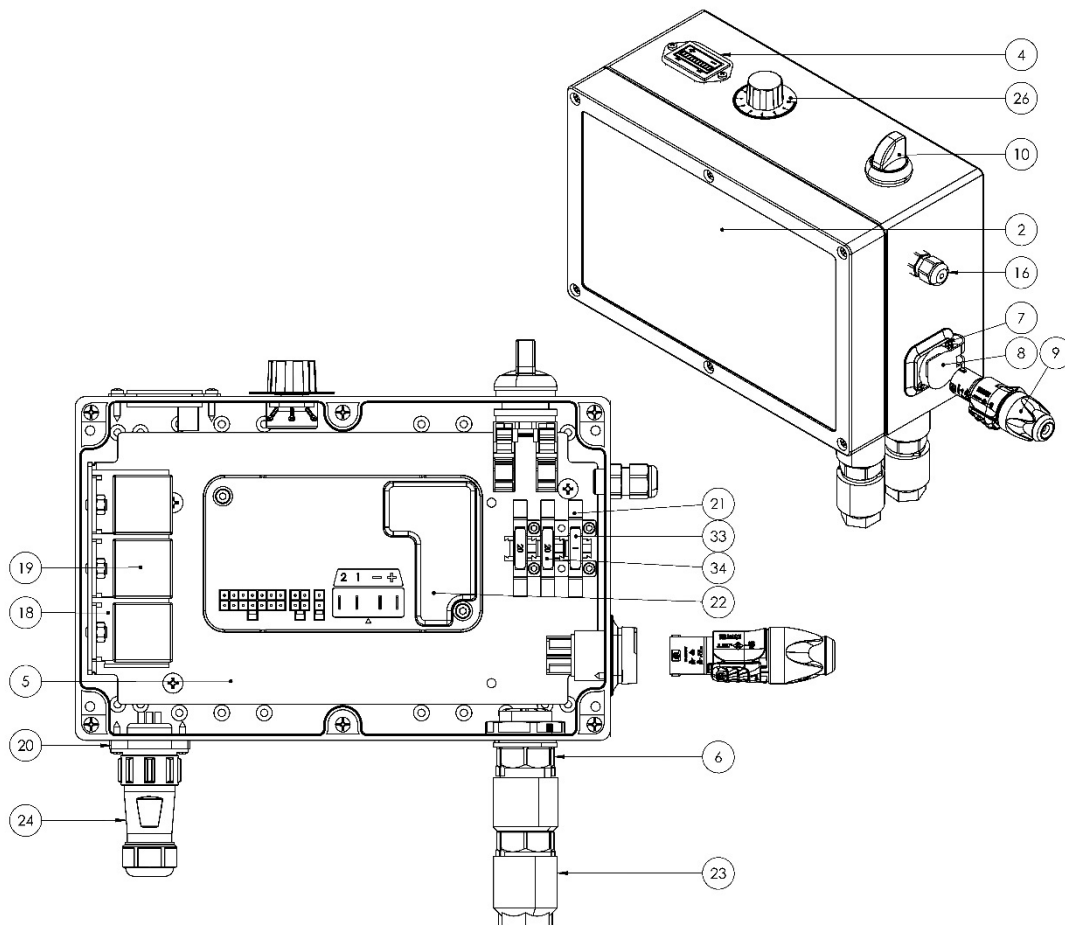
10.9 004-0250-90002

<i>SE 250 stickers</i>		
Position	Part No.	Number
1	909-0201-00315	2
2	909-0201-00317	1
3	909-0201-00319	1
4	909-0201-00320	1
5	909-0201-00431	1
6	Name plate	1
7	909-0201-00322	2
9	909-0201-00680	1
10	909-0201-00203	1



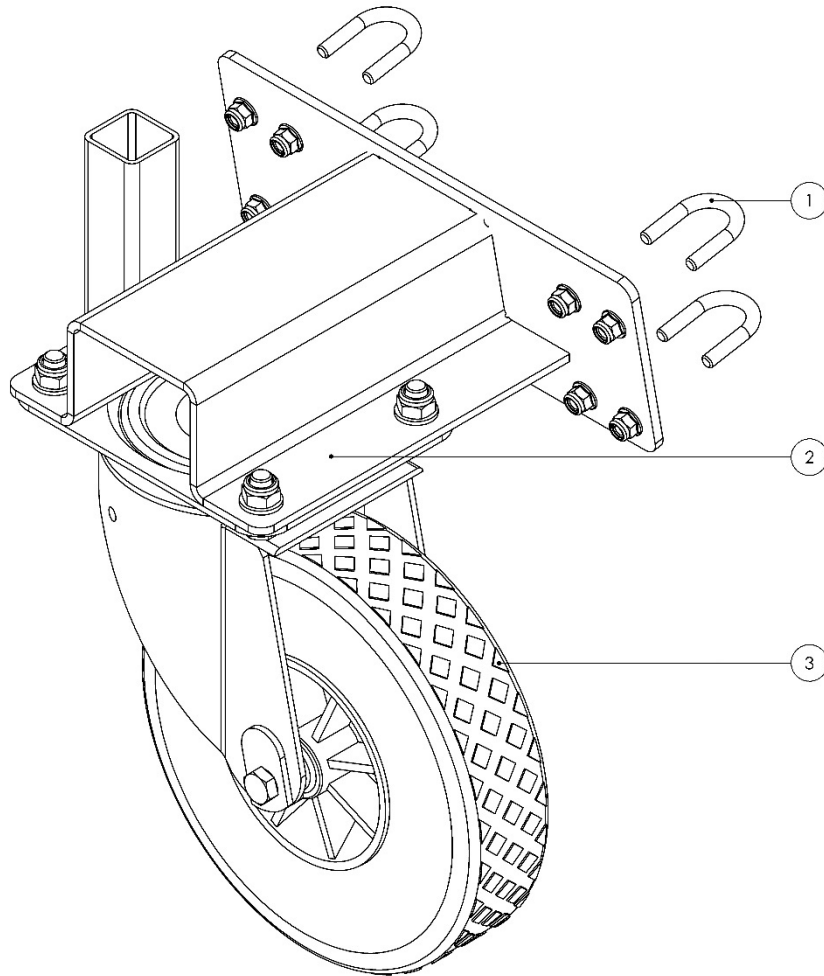
10.10004-0250-90023

<i>Control box</i>			
Position	Part No. (from serial number 88-19-0467)	Part No. (up to serial number 88-19-0466)	Number
2	907-0200-00015-02	907-0200-00015-01	1
4	907-0200-00011	907-0200-00001	1
5	004-0250-00165-03	004-0250-00165-02	1
6	907-0102-00031	907-0102-00031	2
7	907-0102-00007	907-0102-00007	1
8	907-0102-00025	907-0102-00025	1
9	907-0102-00005	907-0102-00005	1
10	907-0101-00007	907-0101-00007	1
	907-0101-00009	907-0101-00009	1
	907-0101-00013	907-0101-00013	1
	907-0101-00015	907-0101-00015	1
16	907-0106-00001	907-0106-00001	1
18	907-0102-00021	907-0102-00021	3
19	907-0101-00003	907-0101-00003	3
20	907-0102-00027	907-0102-00027	1
21	907-0102-00013	907-0102-00013	3
22	907-0200-00009	907-0200-00005	1
23	907-0102-00029	907-0102-00009	2
24	907-0102-00019	907-0102-00019	1
26	907-0200-00007	907-0200-00007	1
33	907-0103-00001	907-0103-00001	1
34	907-0103-00017	907-0103-00017	2



10.11 004-0250-90021

<i>Option third wheel</i>			
Position	Part No. (from serial number 88-19-0467)	Part No. (up to serial number 88-19-0466)	Number
1	908-0501-00003-01	908-0501-00003-01	1
2	004-0250-50031-02	004-0250-50031-02	1
3	905-0404-00005-01	905-0404-00005-01	4



## 11 WARRANTY CONDITIONS

Unless mentioned otherwise, the guarantee conditions as indicated within the METAALUNIE CONDITIONS, formerly referred to as the SMECOMA CONDITIONS, as published by the Koninklijke Metaalunie will be applied.

The clauses below are taken from this METAALUNIE CONDITION as issued by the Koninklijke Metaalunie in 2019.

### **Article 14: Warranty and other claims**

- 14.1 Unless otherwise agreed in writing, the Contractor guarantees the proper execution of the agreed performance for a period of six months after delivery or completion, as detailed in the following paragraphs.
- 14.2 If the parties have agreed to deviating guarantee conditions, the provisions of this article will remain in full force, unless this is in conflict with those deviating guarantee conditions.
- 14.3 If the agreed performance has not been executed properly, the Contractor will decide within a reasonable period of time whether it will still perform the work properly or credit the Client for a proportionate part of the contract amount.
- 14.4 If the Contractor opts to still execute the performance properly, it will determine the manner and time of execution. The Client must in all cases offer the Contractor the opportunity to do so. If the agreed performance (also) included the processing of material provided by the Client, the Client must supply new material at its own expense and risk.
- 14.5 The Client is responsible for sending parts or materials that are to be repaired or replaced by the Contractor to the Contractor's business location.
- 14.6 The following are for the Client's account:
- a. all transport or shipping costs;
  - b. costs for dismantling and assembly;
  - c. and subsistence expenses and travel time.
- 14.7 The Contractor is only obliged to implement the guarantee if the Client has fulfilled all its obligations.
- 14.7 a. The guarantee does not cover defects that are the result of:
- normal wear and tear;
  - improper use;
  - lack of maintenance or maintenance carried out incorrectly;
  - installation, assembly, modification or repairs carried out by the Client or third parties;
  - faulty or unsuitable goods originating from or prescribed by the Client;
  - faulty or unsuitable materials or tools used by the Client.
- b. No guarantee is given for:
- goods delivered that were not new at the time of delivery;

- 
- inspections and repairs carried out on goods owned by the Client;
  - parts that are subject to a manufacturer's guarantee.

14.8 The provisions of paragraphs 3 to 8 of this article apply by analogy to any of the Client's claims based on breach of contract, non-conformity or any other basis whatsoever.





**FLINGK**

Machinebouw

